

CD36 antibody [VM58]

Cat. No. GTX28140

Host	Mouse
Clonality	Monoclonal
Isotype	IgG1
Applications	ICC/IF, IHC-Fr, IHC
Reactivity	Human

Package
200 µl

Applications

Application Note

*Optimal dilutions/concentrations should be determined by the researcher.

Suggested dilution	Recommended dilution
ICC/IF	Assay dependent
IHC-Fr	Assay dependent
IHC	Assay dependent

Not tested in other applications.

Product Note

The monoclonal antibody VM58 is directed against the CD36 antigen, a 90kD glycoprotein, also called GP IIIb expressed on human platelets. The GP IV (GP IIIb) molecule has been shown to function as thrombospondin receptor on platelets and monocytes and as receptor for Plasmodium falciparum infected erythrocytes. The monoclonal antibody reacts with platelets, monocytes, macrophages, erythroblasts and (weakly) with B-cells. In immunohistology the monoclonal antibody reacts with some endothelial cells, adipocytes and the granular layer of the skin. The antibody VM58 induces Fc-receptor-dependent platelet aggregation after binding to platelet. The heterogeneity of the response found in healthy individuals is dependent on the polymorphism of the Fc RII on platelets.

Properties

Form	Liquid
Buffer	PBS
Preservative	3mM Sodium azide
Storage	Store as concentrated solution. Centrifuge briefly prior to opening vial. For short-term storage (1-2 weeks), store at 4°C. For long-term storage, aliquot and store at -20°C or below. Avoid multiple freeze-thaw cycles.
Concentration	0.2 mg/ml (Please refer to the vial label for the specific concentration.)
Immunogen	Human monocytes.
Purification	IgG fraction Ammonium sulfate + DEAE-cellulose, gradient elution
Conjugation	Unconjugated

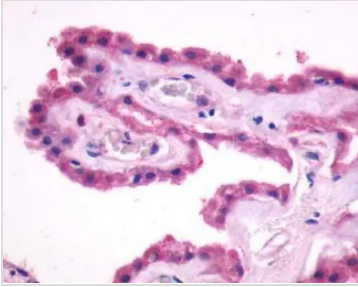


For full product information, images and publications, please visit our [website](#).

Note

For laboratory research use only. Not for any clinical, therapeutic, or diagnostic use in humans or animals. Not for animal or human consumption.

Purchasers shall not, and agree not to enable third parties to, analyze, copy, reverse engineer or otherwise attempt to determine the structure or sequence of the product.

DATA IMAGES


GTX28140 IHC Image



For full product information, images and publications, please visit our [website](#).