

Primary Antibody Diluent

Cat. No. GTX28208**Applications** IHC**References** (10)**Package**

250 ml

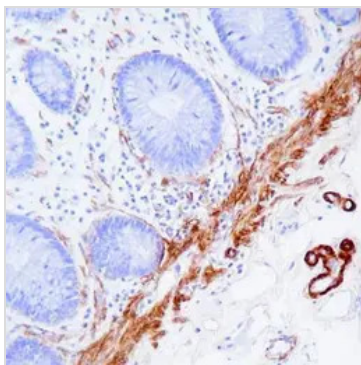
PRODUCT**Summary** Primary antibody diluent (with background reducing component)**Applications****Application Note**

Preparation of Reagent: Bring the diluent to room temperature and mix thoroughly before use. No further preparation is required. Procedure: 1) Pour the diluent in a clean glass container. 2) Add concentrated primary antibody directly in the diluent and mix thoroughly. 3) Diluted antibody is ready to use now and should be stored at 2-8¼ C for further use.

Properties**Form** Liquid**Storage** Keep as concentrated solution, aliquot and store at 4°C.

Note For laboratory research use only. Not for any clinical, therapeutic, or diagnostic use in humans or animals. Not for animal or human consumption.

Purchasers shall not, and agree not to enable third parties to, analyze, copy, reverse engineer or otherwise attempt to determine the structure or sequence of the product.

DATA IMAGES**GTX28208 IHC Image**

For full product information, images and publications, please visit our [website](#).