

CD45RA antibody [MEM-56]

Cat. No. GTX28217

Host	Mouse
Clonality	Monoclonal
Isotype	IgG2b
Applications	WB, IHC-P, FCM, IP, MS
Reactivity	Human, Rat

References (1)

Package

100 µg

Applications

Application Note

*Optimal dilutions/concentrations should be determined by the researcher.

Suggested dilution	Recommended dilution
WB	Assay dependent
IHC-P	Assay dependent
FCM	Assay dependent
IP	Assay dependent
MS	Assay dependent

Not tested in other applications.

Calculated MW 147 kDa. ([Note](#))

Properties

Form	Liquid
Buffer	PBS
Preservative	15mM Sodium azide
Storage	Store as concentrated solution. Centrifuge briefly prior to opening vial. Store at 4°C. DO NOT FREEZE.
Concentration	1 mg/ml (Please refer to the vial label for the specific concentration.)
Immunogen	Human thymocytes and T lymphocytes.
Purification	Protein A purified
Conjugation	Unconjugated

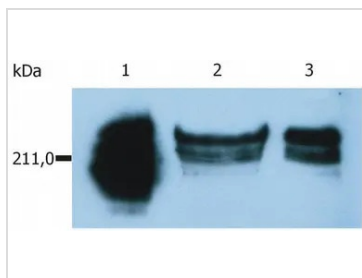


For full product information, images and publications, please visit our [website](#).

For laboratory research use only. Not for any clinical, therapeutic, or diagnostic use in humans or animals. Not for animal or human consumption.

Note

Purchasers shall not, and agree not to enable third parties to, analyze, copy, reverse engineer or otherwise attempt to determine the structure or sequence of the product.

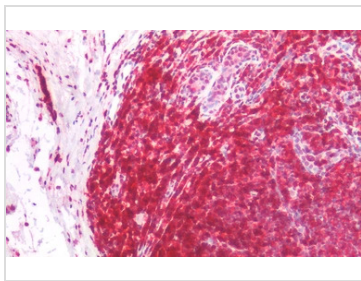
DATA IMAGES

GTX28217 WB Image

WB analysis of HUT-78 cell lysate using GTX28217 CD45RA antibody [MEM-56].

Lane 1 : positive control anti-human CD45 antibody

Lane 2 : GTX28217 (non-reducing cell lysate)

Lane 3 : GTX28217 (reducing cell lysate)


GTX28217 IHC-P Image

IHC-P analysis of human tonsil tissue using GTX28217 CD45RA antibody [MEM-56].

Diultion : 5µg/ml



For full product information, images and publications, please visit our [website](#).