

CD18 antibody [MEM-148]

Cat. No. GTX28220

Host	Mouse
Clonality	Monoclonal
Isotype	IgG1
Applications	WB, FCM, IP, Functional Assay
Reactivity	Human

References (1)

Package

100 µg

Applications

Application Note

*Optimal dilutions/concentrations should be determined by the researcher.

Suggested dilution	Recommended dilution
WB	Assay dependent
FCM	Assay dependent
IP	Assay dependent
Functional Assay	Assay dependent

Not tested in other applications.

Calculated MW 85 kDa. ([Note](#))

Product Note

This antibody recognizes an epitope on CD18 which is essentially inaccessible in intact integrin molecules on resting leukocytes, but is exposed on high-affinity state of LFA-1 or on unassociated CD18.
We do not recommend use of this product for Pig samples.

Properties

Form	Liquid
Buffer	PBS
Preservative	15mM Sodium azide
Storage	Store as concentrated solution. Centrifuge briefly prior to opening vial. Store at 4°C. DO NOT FREEZE.
Concentration	1 mg/ml (Please refer to the vial label for the specific concentration.)
Immunogen	Peripheral blood mononuclear cells
Purification	Protein A purified
Conjugation	Unconjugated



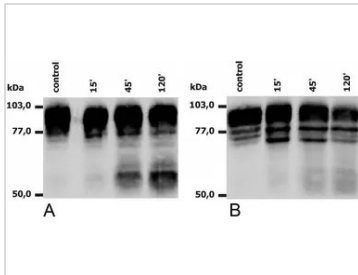
For full product information, images and publications, please visit our [website](#).

For laboratory research use only. Not for any clinical, therapeutic, or diagnostic use in humans or animals. Not for animal or human consumption.

Note

Purchasers shall not, and agree not to enable third parties to, analyze, copy, reverse engineer or otherwise attempt to determine the structure or sequence of the product.

DATA IMAGES



GTX28220 WB Image

WB analysis of PMA-activated neutrophils (A) and monocytes (B) using GTX28220 CD18 antibody [MEM-148]. The antibody MEM-148 recognizes the lower 65 to 70 kDa zone (activation marker) as well as the upper 78 to 96 kDa zone (CD18).



For full product information, images and publications, please visit our [website](https://www.genetex.com).