

SEMA7A antibody [MEM-150]

Cat. No. GTX28222

Host	Mouse
Clonality	Monoclonal
Isotype	IgM
Applications	WB, FCM, IP
Reactivity	Human

Package
100 µg

Applications

Application Note

*Optimal dilutions/concentrations should be determined by the researcher.

Suggested dilution	Recommended dilution
WB	Assay dependent
FCM	Assay dependent
IP	Assay dependent

Not tested in other applications.

Calculated MW 75 kDa. ([Note](#))

Properties

Form	Liquid
Buffer	TBS
Preservative	15mM Sodium azide
Storage	Store as concentrated solution. Centrifuge briefly prior to opening vial. Store at 4°C. DO NOT FREEZE.
Concentration	1 mg/ml (Please refer to the vial label for the specific concentration.)
Immunogen	HPB-ALL human T cell line
Purification	Purified by precipitation and chromatography
Conjugation	Unconjugated

Note

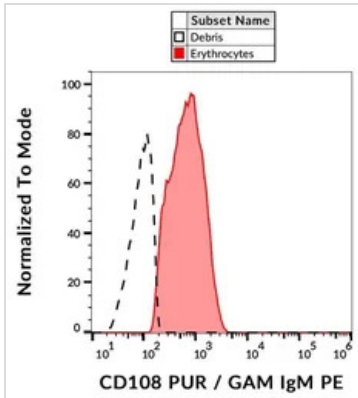
For laboratory research use only. Not for any clinical, therapeutic, or diagnostic use in humans or animals. Not for animal or human consumption.

Purchasers shall not, and agree not to enable third parties to, analyze, copy, reverse engineer or otherwise attempt to determine the structure or sequence of the product.



For full product information, images and publications, please visit our [website](#).

DATA IMAGES



GTX28222 FCM Image

FACS analysis of human peripheral blood using GTX28222 SEMA7A antibody [MEM-150].



For full product information, images and publications, please visit our [website](#).