

## HSV1 + HSV2 gB antibody [T111]

Cat. No. GTX28232

<b>Host</b>	Mouse
<b>Clonality</b>	Monoclonal
<b>Isotype</b>	IgG2b
<b>Applications</b>	ICC/IF, ELISA
<b>Reactivity</b>	Herpes simplex virus

Package  
100 µg

## Applications

## Application Note

\*Optimal dilutions/concentrations should be determined by the researcher.

Suggested dilution	Recommended dilution
ICC/IF	Assay dependent
ELISA	Assay dependent

Not tested in other applications.

## Product Note

This antibody recognizes gB antigen of both HSV1 and HSV2 (Herpes Simplex Virus type 1 and 2), a dsDNA virus, member of Herpesviridae family.

## Properties

<b>Form</b>	Liquid
<b>Buffer</b>	PBS
<b>Preservative</b>	15mM Sodium azide
<b>Storage</b>	Store as concentrated solution. Centrifuge briefly prior to opening vial. Store at 4°C. DO NOT FREEZE.
<b>Concentration</b>	1 mg/ml (Please refer to the vial label for the specific concentration.)
<b>Immunogen</b>	Extract of HSV-1 infected VERO (green monkey kidney) cells.
<b>Purification</b>	Protein A purified
<b>Conjugation</b>	Unconjugated

## Note

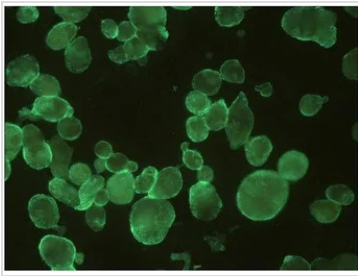
For laboratory research use only. Not for any clinical, therapeutic, or diagnostic use in humans or animals. Not for animal or human consumption.

Purchasers shall not, and agree not to enable third parties to, analyze, copy, reverse engineer or otherwise attempt to determine the structure or sequence of the product.



For full product information, images and publications, please visit our [website](#).

## DATA IMAGES

**GTX28232 ICC/IF Image**

ICC/IF analysis of HSV infected cells using GTX28232 HSV1 + HSV2 antibody [T111].



For full product information, images and publications, please visit our [website](#).