

NCAM antibody [MEM-188]

Cat. No. GTX28233

Host	Mouse
Clonality	Monoclonal
Isotype	IgG2a
Applications	IHC-P, FCM, IP
Reactivity	Human, Primate

Package
100 µg

Applications

Application Note

*Optimal dilutions/concentrations should be determined by the researcher.

Suggested dilution	Recommended dilution
IHC-P	Assay dependent
FCM	Assay dependent
IP	Assay dependent

Not tested in other applications.

Properties

Form	Liquid
Buffer	PBS
Preservative	15mM Sodium azide
Storage	Store as concentrated solution. Centrifuge briefly prior to opening vial. Store at 4°C. DO NOT FREEZE.
Concentration	1 mg/ml (Please refer to the vial label for the specific concentration.)
Immunogen	KG-1 human acute myelogenous leukemia cell line
Purification	Protein A purified
Conjugation	Unconjugated

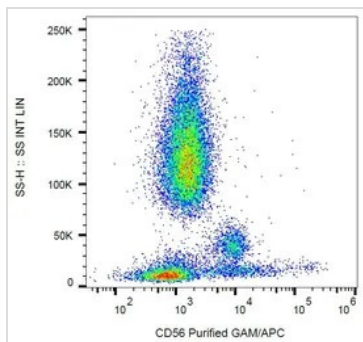
Note

For laboratory research use only. Not for any clinical, therapeutic, or diagnostic use in humans or animals. Not for animal or human consumption.

Purchasers shall not, and agree not to enable third parties to, analyze, copy, reverse engineer or otherwise attempt to determine the structure or sequence of the product.



For full product information, images and publications, please visit our [website](#).

DATA IMAGES

GTX28233 FCM Image

FACS analysis of human peripheral blood lymphocytes using GTX28233 NCAM antibody [MEM-188].



For full product information, images and publications, please visit our [website](#).