

## CD20 antibody [MEM-97]

Cat. No. GTX28237

Host	Mouse
Clonality	Monoclonal
Isotype	IgG1
Applications	IHC-Fr, FCM, IP
Reactivity	Human, Bovine, Dog, Pig

References ( 1 )

Package

100 µg

## Applications

## Application Note

\*Optimal dilutions/concentrations should be determined by the researcher.

Suggested dilution	Recommended dilution
IHC-Fr	Assay dependent
FCM	Assay dependent
IP	Assay dependent

Not tested in other applications.

## Properties

Form	Liquid
Buffer	PBS
Preservative	15mM Sodium azide
Storage	Store as concentrated solution. Centrifuge briefly prior to opening vial. Store at 4°C. DO NOT FREEZE.
Concentration	1 mg/ml (Please refer to the vial label for the specific concentration.)
Immunogen	Raji human Burkitt's lymphoma cell line
Purification	Protein A purified
Conjugation	Unconjugated

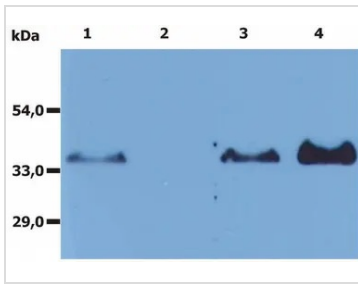
## Note

For laboratory research use only. Not for any clinical, therapeutic, or diagnostic use in humans or animals. Not for animal or human consumption.

Purchasers shall not, and agree not to enable third parties to, analyze, copy, reverse engineer or otherwise attempt to determine the structure or sequence of the product.



For full product information, images and publications, please visit our [website](#).

**DATA IMAGES**

**GTX28237 IP Image**

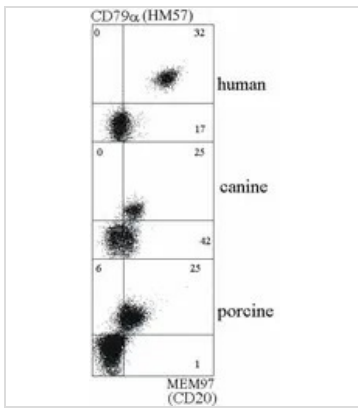
IP analysis of Raji cell lysate using GTX28237 CD20 antibody [MEM-97]. The signal was detected by another Rabbit polyclonal anti-CD20 antibody in WB assay.

Lane 1 : Raji cell lysate

Lane 2 : Immunoprecipitate by mouse IgG1 isotype control

Lane 3 : Raji cell lysate

Lane 4 : Immunoprecipitate by GTX28237


**GTX28237 FCM Image**

FACS analysis of human, dog, and pig B lymphocytes using GTX28237 CD20 antibody [MEM-97].



For full product information, images and publications, please visit our [website](https://www.genetex.com).