

CD80 antibody [MEM-233]

Cat. No. GTX28239

Host	Mouse
Clonality	Monoclonal
Isotype	IgG1
Applications	FCM, IP
Reactivity	Human

References (3)

Package

100 µg

Applications

Application Note

*Optimal dilutions/concentrations should be determined by the researcher.

Suggested dilution	Recommended dilution
FCM	Assay dependent
IP	Assay dependent

Not tested in other applications.

Properties

Form	Liquid
Buffer	PBS
Preservative	15mM Sodium azide
Storage	Store as concentrated solution. Centrifuge briefly prior to opening vial. Store at 4°C. DO NOT FREEZE.
Concentration	1 mg/ml (Please refer to the vial label for the specific concentration.)
Immunogen	Extracellular domain of human CD80 fused to human IgG1(Fc)
Purification	Protein A purified
Conjugation	Unconjugated

Note

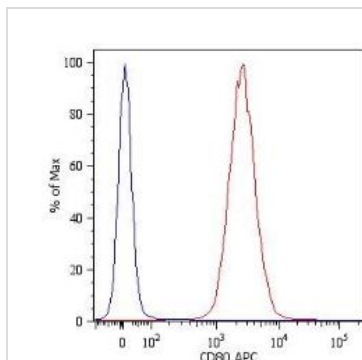
For laboratory research use only. Not for any clinical, therapeutic, or diagnostic use in humans or animals. Not for animal or human consumption.

Purchasers shall not, and agree not to enable third parties to, analyze, copy, reverse engineer or otherwise attempt to determine the structure or sequence of the product.



For full product information, images and publications, please visit our [website](#).

DATA IMAGES



GTX28239 FCM Image

Surface staining of RAJI human Burkitt lymphoma cell line with anti-human CD80: APC (GTX78330). Total viable cells were used for analysis.



For full product information, images and publications, please visit our [website](#).