

## Influenza A virus H1N1 HA (Hemagglutinin) antibody [C102]

**Cat. No. GTX28262**

<b>Host</b>	Mouse
<b>Clonality</b>	Monoclonal
<b>Isotype</b>	IgG1
<b>Applications</b>	ICC/IF, FCM, ELISA, Hemagglutinin inhibition
<b>Reactivity</b>	Influenza A virus (H1N1)

References ( 5 )

★★★★★ Review ( 1 )

Package

100 µg

## Applications

**Application Note**

\*Optimal dilutions/concentrations should be determined by the researcher.

Suggested dilution	Recommended dilution
ICC/IF	Assay dependent
FCM	Assay dependent
ELISA	Assay dependent
Hemagglutinin inhibition	Assay dependent

Not tested in other applications.

## Properties

<b>Form</b>	Liquid
<b>Buffer</b>	PBS
<b>Preservative</b>	0.09% Sodium azide
<b>Storage</b>	Store as concentrated solution. Centrifuge briefly prior to opening vial. Store at 4°C.
<b>Concentration</b>	Batch dependent (Please refer to the vial label for the specific concentration.)
<b>Immunogen</b>	Purified influenza virus type A strain H1N1.
<b>Purification</b>	Protein G purified
<b>Conjugation</b>	Unconjugated

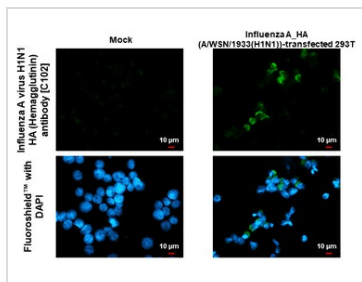
**Note**

For laboratory research use only. Not for any clinical, therapeutic, or diagnostic use in humans or animals. Not for animal or human consumption.

Purchasers shall not, and agree not to enable third parties to, analyze, copy, reverse engineer or otherwise attempt to determine the structure or sequence of the product.

For full product information, images and publications, please visit our [website](#).

## DATA IMAGES

**GTX28262 ICC/IF Image**

Influenza A virus H1N1 HA (Hemagglutinin) antibody [C102] detects Influenza A virus H1N1 HA (Hemagglutinin) protein by immunofluorescent analysis.

Sample: Mock and transfected 293T cells were fixed in ice-cold MeOH for 5 min.

Green: Influenza A virus H1N1 HA (Hemagglutinin) stained by Influenza A virus H1N1 HA (Hemagglutinin) antibody [C102] (GTX28262) diluted at 1:500.

Blue: Fluoroshield with DAPI (GTX30920).



For full product information, images and publications, please visit our [website](#).