

## Canine parvovirus VP2 antibody [8H7]

Cat. No. GTX28265

Host	Mouse
Clonality	Monoclonal
Isotype	IgG2a
Applications	WB, ELISA, Hemagglutinin inhibition, Immunodiffusion, Lateral Flow, Sandwich ELISA
Reactivity	Canine parvovirus

References ( 1 )

Package

100 µg

## Applications

## Application Note

\*Optimal dilutions/concentrations should be determined by the researcher.

Suggested dilution	Recommended dilution
WB	Assay dependent
ELISA	Assay dependent
Hemagglutinin inhibition	Assay dependent
Immunodiffusion	Assay dependent
Lateral Flow	Assay dependent
Sandwich ELISA	Assay dependent

**Note : Capture : GTX28264, Detection : GTX28265**

Not tested in other applications.

## Properties

Form	Liquid
Buffer	PBS
Preservative	0.09% Sodium azide
Storage	Store as concentrated solution. Centrifuge briefly prior to opening vial. Store at 4°C.
Concentration	Batch dependent (Please refer to the vial label for the specific concentration.)
Immunogen	Canine parvovirus
Purification	Protein A purified
Conjugation	Unconjugated

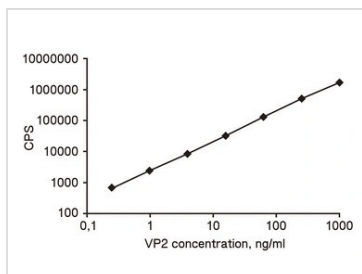
For full product information, images and publications, please visit our [website](#).

For laboratory research use only. Not for any clinical, therapeutic, or diagnostic use in humans or animals. Not for animal or human consumption.

## Note

Purchasers shall not, and agree not to enable third parties to, analyze, copy, reverse engineer or otherwise attempt to determine the structure or sequence of the product.

## DATA IMAGES



### GTx28265 Sandwich ELISA Image

Sandwich ELISA analysis of serial diluted GTx04616-pro Canine parvovirus type 2b VP2 protein using Canine parvovirus VP2 antibodies.

Capture : GTx28264, 1 µg/well

Detection : GTx28265 labeled with europium chelate, 200 ng/well



For full product information, images and publications, please visit our [website](#).