

Cardiac Troponin T antibody [1C11]

Cat. No. GTX28295

Host	Mouse
Clonality	Monoclonal
Isotype	IgG1
Applications	WB, ICC/IF, FCM, ELISA, Immunoassay, IHC, Purification, Sandwich ELISA
Reactivity	Human, Mouse

References (13)

Package

200 µg

Applications

Application Note

*Optimal dilutions/concentrations should be determined by the researcher.

Suggested dilution	Recommended dilution
WB	Assay dependent
ICC/IF	Assay dependent
FCM	Assay dependent
ELISA	Assay dependent
Immunoassay	Assay dependent
IHC	Assay dependent
Purification	Assay dependent
Sandwich ELISA	Assay dependent

Note : Best capture antibodies for BIAcore.**Capture : GTX28295, Detection : GTX28296/GTX10222/GTX14541 or Capture : GTX10223, Detection : GTX28295**

Not tested in other applications.

Calculated MW 36 kDa. ([Note](#))**Product Note** No cross-reactivity with skeletal TnT.

Properties

Form	Liquid
Buffer	PBS
Preservative	0.09% Sodium azide
Storage	Store as concentrated solution. Centrifuge briefly prior to opening vial. Store at 4°C.
Concentration	Batch dependent (Please refer to the vial label for the specific concentration.)
Immunogen	Free human cTnT



For full product information, images and publications, please visit our [website](#).

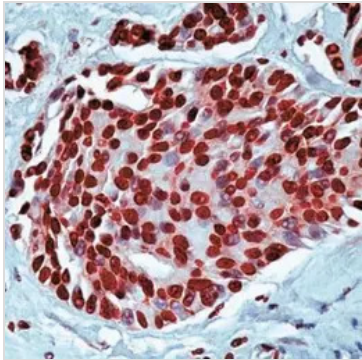
Purification Protein A purified

Conjugation Unconjugated

Note For laboratory research use only. Not for any clinical, therapeutic, or diagnostic use in humans or animals. Not for animal or human consumption.

Purchasers shall not, and agree not to enable third parties to, analyze, copy, reverse engineer or otherwise attempt to determine the structure or sequence of the product.

DATA IMAGES



GTX28295 IHC Image



For full product information, images and publications, please visit our [website](#).