

# NOTCH1 antibody

**Cat. No. GTX28387**

<b>Host</b>	Rabbit
<b>Clonality</b>	Polyclonal
<b>Isotype</b>	IgG
<b>Applications</b>	WB, IHC-P, ELISA
<b>Reactivity</b>	Human

**Package**  
200 µl

## Applications

### Application Note

\*Optimal dilutions/concentrations should be determined by the researcher.

Suggested dilution	Recommended dilution
WB	1:2000-1:10000
IHC-P	1:1000-5000
ELISA	1:20000-1:100000

Not tested in other applications.

**Calculated MW** 273 kDa. ([Note](#))

**Product Note** Notch1 antibody is directed against human NOTCH 1. No reaction is detected against NOTCH 2. No reactivity was observed against Mouse Notch. Other species have not been tested.

## Properties

<b>Form</b>	Liquid
<b>Buffer</b>	20mM Potassium Phosphate, 150mM NaCl
<b>Preservative</b>	0.01% Sodium azide
<b>Storage</b>	Store as concentrated solution. Centrifuge briefly prior to opening vial. For short-term storage (1-2 weeks), store at 4°C. For long-term storage, aliquot and store at -20°C or below. Avoid multiple freeze-thaw cycles.
<b>Concentration</b>	75 mg/ml (Please refer to the vial label for the specific concentration.)
<b>Immunogen</b>	Synthetic peptide corresponding to an internal region near amino acid 2480-2510 of human Notch 1.
<b>Conjugation</b>	Unconjugated

### Note

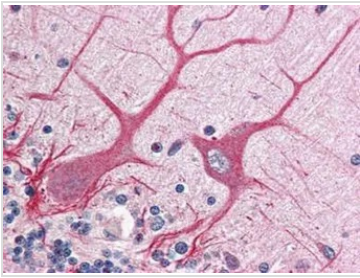
For laboratory research use only. Not for any clinical, therapeutic, or diagnostic use in humans or animals. Not for animal or human consumption.

Purchasers shall not, and agree not to enable third parties to, analyze, copy, reverse engineer or otherwise attempt to determine the structure or sequence of the product.



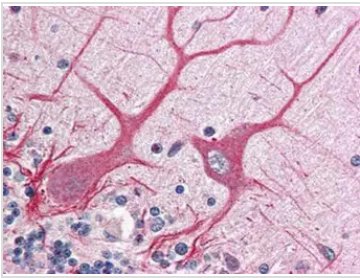
For full product information, images and publications, please visit our [website](#).

## DATA IMAGES



### GTx28387 IHC-P Image

IHC-P analysis of human brain cerebellum tissue using Notch 1 antibody at a dilution of 1:500. The image shows the localization of antibody as the precipitated red signal, with a hematoxylin purple nuclear counter stain.



### GTx28387 IHC-P Image

IHC-P analysis of human cerebellum tissue using GTx28387 NOTCH1 antibody.  
Dilution : 1:500



For full product information, images and publications, please visit our [website](#).