

TMS1 antibody

Cat. No. GTX28394

Host	Rabbit
Clonality	Polyclonal
Isotype	IgG
Applications	WB, ICC/IF, IHC-P, ELISA
Reactivity	Human

Package
100 µg

Applications

Application Note

*Optimal dilutions/concentrations should be determined by the researcher.

Suggested dilution	Recommended dilution
WB	1 µg/ml
ICC/IF	5 µg/ml
IHC-P	2.5 µg/mL
ELISA	Assay dependent

Not tested in other applications.

Calculated MW 22 kDa. ([Note](#))

Properties

Form	Liquid
Buffer	PBS
Preservative	0.02% Sodium azide
Storage	Store as concentrated solution. Centrifuge briefly prior to opening vial. For short-term storage (1-2 weeks), store at 4°C. For long-term storage, aliquot and store at -20°C or below. Avoid multiple freeze-thaw cycles.
Concentration	Batch dependent (Please refer to the vial label for the specific concentration.)
Immunogen	Peptide corresponding to aa 182-195 of human ASC.
Purification	Purified by affinity chromatography
Conjugation	Unconjugated

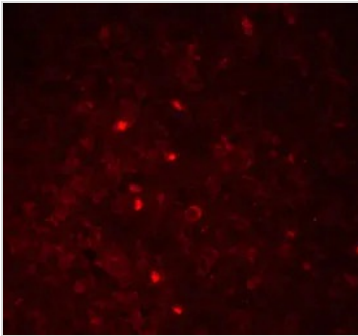
Note

For laboratory research use only. Not for any clinical, therapeutic, or diagnostic use in humans or animals. Not for animal or human consumption.

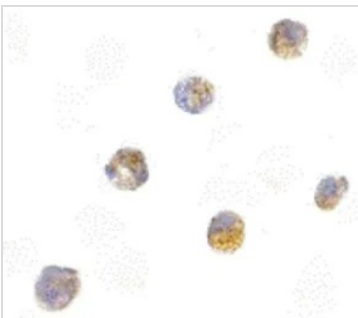
Purchasers shall not, and agree not to enable third parties to, analyze, copy, reverse engineer or otherwise attempt to determine the structure or sequence of the product.



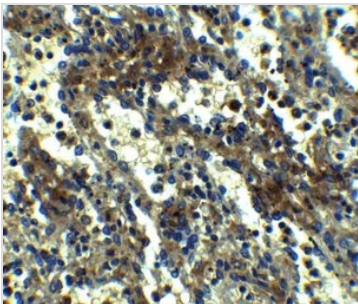
For full product information, images and publications, please visit our [website](#).

DATA IMAGES

GTX28394 IHC-P Image

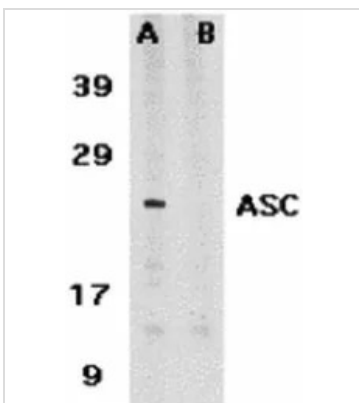
IHC-P analysis of 4% PFA-fixed Human Spleen Tissue using GTX28394 TMS1 antibody.
Dilution : 20µg/mL


GTX28394 ICC/IF Image

ICC/IF analysis of formaldehyde-fixed HL-60 cells using GTX28394 TMS1 antibody.
Antigen retrieval : Heat mediation with a citrate buffer (pH6)
Dilution : 5µg/mL


GTX28394 IHC-P Image

IHC-P analysis of formaldehyde fixed Human Spleen Tissue using GTX28394 TMS1 antibody.
Antigen retrieval : Heat mediation with a citrate buffer (pH6)
Dilution : 2.5µg/mL


GTX28394 WB Image

WB analysis of HL-60 cell lysate using GTX28394 TMS1 antibody in the absence (A) or presence (B) of blocking peptide.
Dilution : 1µg/mL
Loading : 15µg of lysates per lane



For full product information, images and publications, please visit our [website](https://www.genetex.com).