

BNIP3L antibody

Cat. No. GTX28399

Host	Rabbit
Clonality	Polyclonal
Isotype	IgG
Applications	WB, IHC-P, ELISA
Reactivity	Human

References (1)

Package

100 µg

Applications

Application Note

*Optimal dilutions/concentrations should be determined by the researcher.

Suggested dilution	Recommended dilution
WB	1µg/ml
IHC-P	Assay dependent
ELISA	Assay dependent

Not tested in other applications.

Calculated MW	24 kDa. (Note)
Product Note	This antibody recognizes monomeric Bnip3L.

Properties

Form	Liquid
Buffer	PBS
Preservative	0.02% Sodium azide
Storage	Store as concentrated solution. Centrifuge briefly prior to opening vial. For short-term storage (1-2 weeks), store at 4°C. For long-term storage, aliquot and store at -20°C or below. Avoid multiple freeze-thaw cycles.
Concentration	Batch dependent (Please refer to the vial label for the specific concentration.)
Immunogen	Peptide corresponding to aa 77- 92 of human Bnip3L (accession no. AF067396) This amino acid sequence is identical to that of mouse.
Purification	Purified by affinity chromatography
Conjugation	Unconjugated



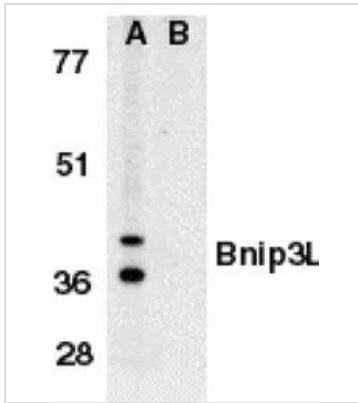
For full product information, images and publications, please visit our [website](#).

For laboratory research use only. Not for any clinical, therapeutic, or diagnostic use in humans or animals. Not for animal or human consumption.

Note

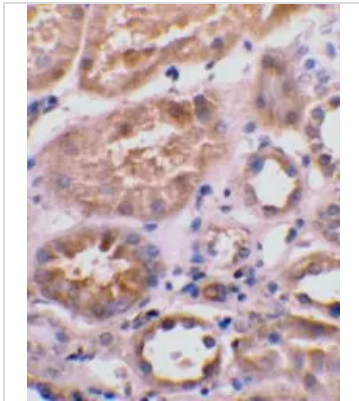
Purchasers shall not, and agree not to enable third parties to, analyze, copy, reverse engineer or otherwise attempt to determine the structure or sequence of the product.

DATA IMAGES



GTX28399 WB Image

Western blot analysis of Bnip3L in K562 whole cell lysate in the absence (A), or presence (B) of immunogenic peptide with Bnip3L antibody (GTX28399) at 1µg/ml.



GTX28399 IHC-P Image

Immunohistochemical staining of human kidney tissue using Bnip3L antibody (GTX28399) at 2µg/ml.



For full product information, images and publications, please visit our [website](https://www.genetex.com).