

DR4 antibody

Cat. No. GTX28414

Host	Rabbit
Clonality	Polyclonal
Isotype	IgG
Applications	WB, ICC/IF, IHC-P, ELISA
Reactivity	Human, Mouse, Rat

References (5)

Package

100 µg

Applications

Application Note

*Optimal dilutions/concentrations should be determined by the researcher.

Suggested dilution	Recommended dilution
WB	1 µg/mL
ICC/IF	10 µg/mL
IHC-P	5 µg/mL
ELISA	Assay dependent

Not tested in other applications.

Calculated MW 50 kDa. ([Note](#))**Product Note** Does not cross react with DR5.

Properties

Form	Liquid
Buffer	PBS
Preservative	0.02% Sodium azide
Storage	Store as concentrated solution. Centrifuge briefly prior to opening vial. For short-term storage (1-2 weeks), store at 4°C. For long-term storage, aliquot and store at -20°C or below. Avoid multiple freeze-thaw cycles.
Concentration	1 mg/ml (Please refer to the vial label for the specific concentration.)
Immunogen	Synthetic peptide, corresponding to amino acids 427-445 of Human DR4.
Purification	Purified by antigen-affinity chromatography
Conjugation	Unconjugated



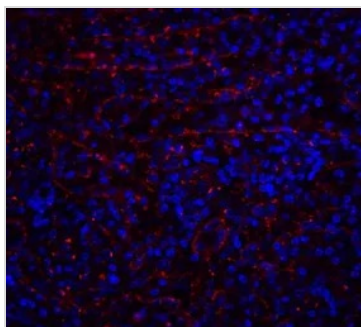
For full product information, images and publications, please visit our [website](#).

For laboratory research use only. Not for any clinical, therapeutic, or diagnostic use in humans or animals. Not for animal or human consumption.

Note

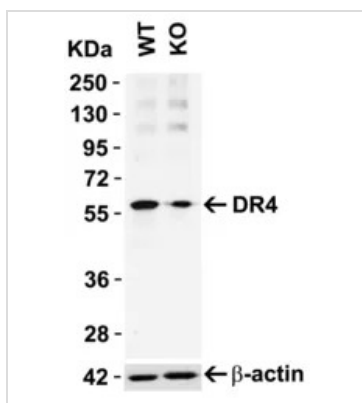
Purchasers shall not, and agree not to enable third parties to, analyze, copy, reverse engineer or otherwise attempt to determine the structure or sequence of the product.

DATA IMAGES

**GTX28414 IHC-P Image**

IHC-P analysis of human spleen tissue using GTX28414 DR4 antibody.

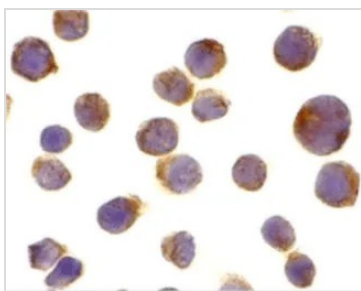
Working concentration : 20 µg/ml

**GTX28414 WB Image**

WB analysis of HeLa cell or DR4 KO cell lysates using GTX28414 DR4 antibody.

Dilution : 1µg/mL

Loading : 10µg

**GTX28414 ICC/IF Image**

ICC/IF analysis of Jurkat cells using GTX28414 DR4 antibody.

Working concentration : 10 µg/ml



For full product information, images and publications, please visit our [website](#).