

## DRAK2 antibody

**Cat. No. GTX28419**

<b>Host</b>	Rabbit
<b>Clonality</b>	Polyclonal
<b>Isotype</b>	IgG
<b>Applications</b>	WB, ICC/IF, ELISA
<b>Reactivity</b>	Human

**Package**  
100 µg

## Applications

**Application Note**

\*Optimal dilutions/concentrations should be determined by the researcher.

Suggested dilution	Recommended dilution
WB	1µg/ml
ICC/IF	10µg/ml
ELISA	Assay dependent

Not tested in other applications.

**Calculated MW** 42 kDa. ([Note](#))

**Product Note** This antibody recognizes human DRAK2 (45kDa). No cross-reactivity with DRAK1, DAP or ZIP kinases.

## Properties

<b>Form</b>	Liquid
<b>Buffer</b>	PBS
<b>Preservative</b>	0.02% Sodium azide
<b>Storage</b>	Store as concentrated solution. Centrifuge briefly prior to opening vial. For short-term storage (1-2 weeks), store at 4°C. For long-term storage, aliquot and store at -20°C or below. Avoid multiple freeze-thaw cycles.
<b>Concentration</b>	Batch dependent (Please refer to the vial label for the specific concentration.)
<b>Immunogen</b>	Peptide corresponding to aa 351-365 of human DRAK2 (accession no. AB011421).
<b>Purification</b>	Purified by affinity chromatography
<b>Conjugation</b>	Unconjugated



For full product information, images and publications, please visit our [website](#).

For laboratory research use only. Not for any clinical, therapeutic, or diagnostic use in humans or animals. Not for animal or human consumption.

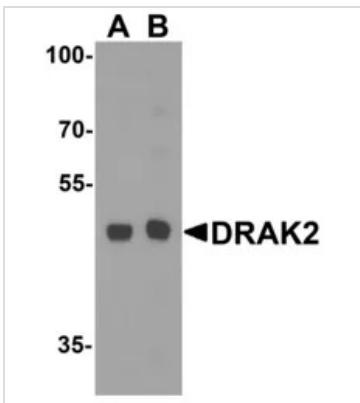
**Note**  
 Purchasers shall not, and agree not to enable third parties to, analyze, copy, reverse engineer or otherwise attempt to determine the structure or sequence of the product.

DATA IMAGES



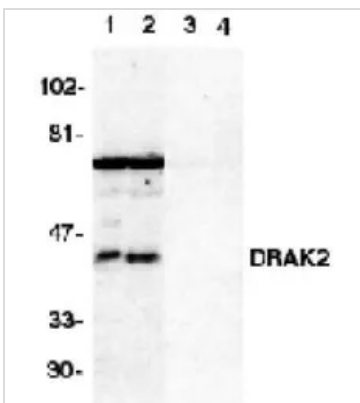
**GTX28419 ICC/IF Image**

Immunocytochemical staining of DRAK2 in Jurkat cells with DRAK2 antibody (GTX28419) at 10µg/ml.



**GTX28419 WB Image**

WB analysis of Raji cell lysate using GTX28419 DRAK2 antibody.  
 Dilution : 1µg/ml (Lane A) and 2 µg/ml (Lane B)



**GTX28419 WB Image**

Western blot analysis of DRAK2 in Jurkat (1,3) and Raji (2,4) cell lysate in the absence (1,2) or presence (3,4) of blocking peptide with DRAK2 antibody (GTX28419) at 1 g/ml.



For full product information, images and publications, please visit our [website](#).