

RAIDD antibody, C-term

Cat. No. GTX28425

Host	Rabbit
Clonality	Polyclonal
Isotype	IgG
Applications	WB, ICC/IF, IHC-P, ELISA
Reactivity	Human

Package
100 µg

Applications

Application Note

*Optimal dilutions/concentrations should be determined by the researcher.

Suggested dilution	Recommended dilution
WB	1 µg/ml
ICC/IF	Assay dependent
IHC-P	Assay dependent
ELISA	Assay dependent

Not tested in other applications.

Calculated MW 23 kDa. ([Note](#))

Properties

Form	Liquid
Buffer	PBS
Preservative	0.02% Sodium azide
Storage	Store as concentrated solution. Centrifuge briefly prior to opening vial. For short-term storage (1-2 weeks), store at 4°C. For long-term storage, aliquot and store at -20°C or below. Avoid multiple freeze-thaw cycles.
Concentration	Batch dependent (Please refer to the vial label for the specific concentration.)
Immunogen	Synthetic peptide corresponding to aa 181-199 at the C-terminus of human RAIDD (accession no. AAB42217).
Purification	Purified by affinity chromatography
Conjugation	Unconjugated

Note

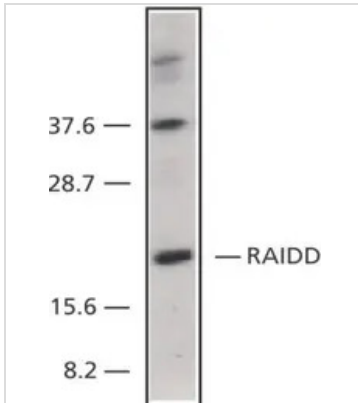
For laboratory research use only. Not for any clinical, therapeutic, or diagnostic use in humans or animals. Not for animal or human consumption.

Purchasers shall not, and agree not to enable third parties to, analyze, copy, reverse engineer or otherwise attempt to determine the structure or sequence of the product.



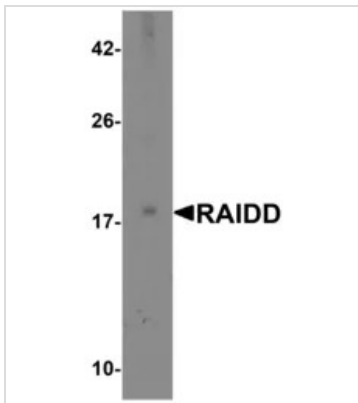
For full product information, images and publications, please visit our [website](#).

DATA IMAGES



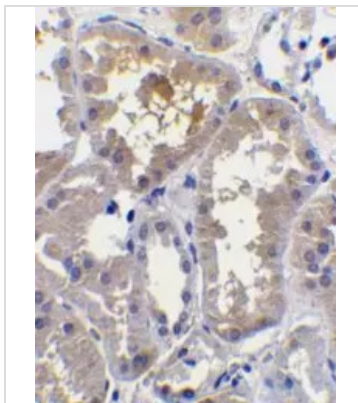
GTx28425 WB Image

Western blot analysis of RAIDD in HeLa total cell lysate with Anti-RAIDD (CT) (Cat. No.GTx28425) at 1:500 dilution.



GTx28425 WB Image

WB analysis of MCF7 total cell lysate using GTx28425 RAIDD antibody, C-term.
Dilution : 2 µg/ml



GTx28425 IHC-P Image

Immunohistochemical staining of RAIDD in human kidney with RAIDD antibody (GTx28425) at 10µg/ml.



For full product information, images and publications, please visit our [website](https://www.genetex.com).