

# RIP2 antibody

**Cat. No. GTX28428**

<b>Host</b>	Rabbit
<b>Clonality</b>	Polyclonal
<b>Isotype</b>	IgG
<b>Applications</b>	WB, ICC/IF
<b>Reactivity</b>	Human, Mouse, Rat

[References \( 2 \)](#)

[Package](#)

100 µg

## Applications

### Application Note

\*Optimal dilutions/concentrations should be determined by the researcher.

Suggested dilution	Recommended dilution
WB	1µg/ml
ICC/IF	10µg/ml

Not tested in other applications.

**Calculated MW** 61 kDa. ( [Note](#) )

## Properties

<b>Form</b>	Liquid
<b>Buffer</b>	PBS
<b>Preservative</b>	0.02% Sodium azide
<b>Storage</b>	Store as concentrated solution. Centrifuge briefly prior to opening vial. For short-term storage (1-2 weeks), store at 4°C. For long-term storage, aliquot and store at -20°C or below. Avoid multiple freeze-thaw cycles.
<b>Concentration</b>	Batch dependent (Please refer to the vial label for the specific concentration.)
<b>Immunogen</b>	Synthetic peptide corresponding to aa 11-30 at the N-terminus of human RICK (accession no. O43353).
<b>Purification</b>	Purified by affinity chromatography
<b>Conjugation</b>	Unconjugated

### Note

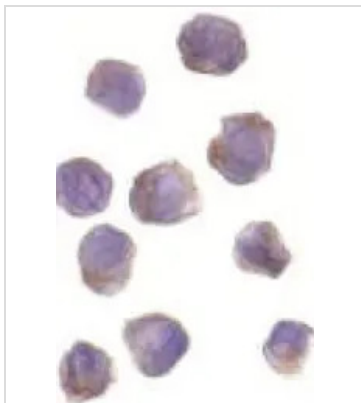
For laboratory research use only. Not for any clinical, therapeutic, or diagnostic use in humans or animals. Not for animal or human consumption.

Purchasers shall not, and agree not to enable third parties to, analyze, copy, reverse engineer or otherwise attempt to determine the structure or sequence of the product.



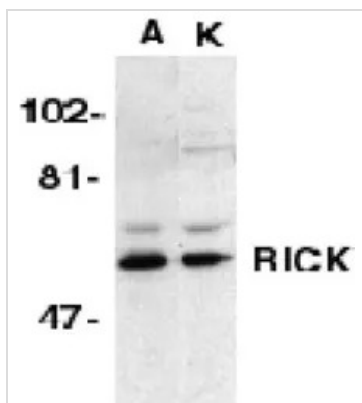
For full product information, images and publications, please visit our [website](#).

## DATA IMAGES



**GTx28428 ICC/IF Image**

Immunocytochemical staining of RIP2 in A431 cells with RIP2 antibody (GTx28428) at 10µg/ml.



**GTx28428 WB Image**

Western blot analysis of RIP2 in A431 (A) and K562 (K) whole cell lysate with RIP2 antibody (GTx28428) at 1 g/ml.



For full product information, images and publications, please visit our [website](#).