

Osteopontin antibody

Cat. No. GTX28448

Host	Rabbit
Clonality	Polyclonal
Isotype	IgG
Applications	WB, ICC/IF, IHC-P, IHC-Fr, IP, ELISA, IHC
Reactivity	Human, Mouse, Rat

References (8)

Package

200 µl

Applications

Application Note

*Optimal dilutions/concentrations should be determined by the researcher.

Suggested dilution	Recommended dilution
WB	1:500-1:2000
ICC/IF	Assay dependent
IHC-P	1:100-1:300
IHC-Fr	1:100-1:300
IP	1:100
ELISA	1:5000-1:20000
IHC	1:100 - 1:300

Not tested in other applications.

Calculated MW 35 kDa. ([Note](#))**Product Note**

Osteopontin is directed against human osteopontin. The antibody recognizes the full-length osteopontin protein (which runs at 66 kDa on westerns), as well as the C-terminal fragments of both thrombin and MMP-cleaved OPN. The 32 kDa MMP-cleaved C-fragment is recognized, but not the 40 kDa N-terminal fragment.

Properties

Form	Liquid
Buffer	20mM Potassium Phosphate, 150mM NaCl
Preservative	0.01% Sodium azide
Storage	Store as concentrated solution. Centrifuge briefly prior to opening vial. For short-term storage (1-2 weeks), store at 4°C. For long-term storage, aliquot and store at -20°C or below. Avoid multiple freeze-thaw cycles.
Concentration	95 mg/ml (Please refer to the vial label for the specific concentration.)
Immunogen	Synthetic peptide from the human osteopontin protein, conjugated to KLH using maleimide, also available as GTX29078.



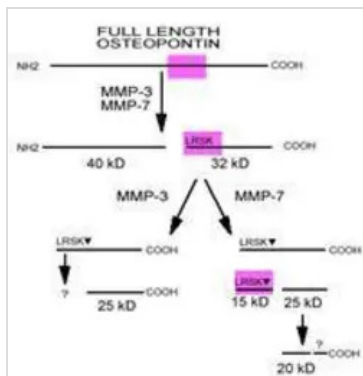
For full product information, images and publications, please visit our [website](#).

Conjugation Unconjugated

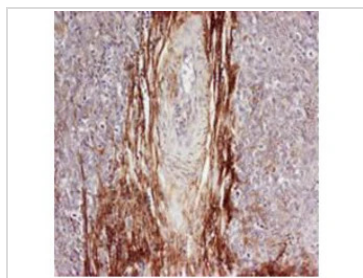
For laboratory research use only. Not for any clinical, therapeutic, or diagnostic use in humans or animals. Not for animal or human consumption.

Note Purchasers shall not, and agree not to enable third parties to, analyze, copy, reverse engineer or otherwise attempt to determine the structure or sequence of the product.

DATA IMAGES

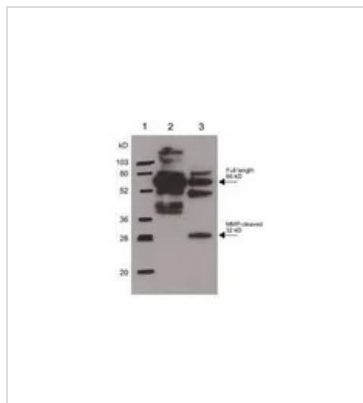


GTX28448 Image



GTX28448 IHC-P Image

IHC-P analysis of human breast cancer and adjacent normal tissues using GTX28448 Osteopontin antibody.



GTX28448 WB Image

WB analysis of human osteopontin protein using GTX28448 Osteopontin antibody.

- Lane 1: Molecular Weight Marker
- Lane 2: Human Osteopontin
- Lane 3: MMP-cleaved Osteopontin.
- Loading : 250 ng
- Dilution : 1:1000



For full product information, images and publications, please visit our [website](#).