

Angiotensin 1 antibody

Cat. No. GTX28451

Host	Rabbit
Clonality	Polyclonal
Isotype	IgG
Applications	WB, ICC/IF, IHC-P, IP, ELISA
Reactivity	Human, Mouse

References (3)

Package

100 µl

Applications

Application Note

*Optimal dilutions/concentrations should be determined by the researcher.

Suggested dilution	Recommended dilution
WB	1:500-1:2000
ICC/IF	Assay dependent
IHC-P	1:200-1:800
IP	Assay dependent
ELISA	1:5000-1:25000

Not tested in other applications.

Calculated MW 58 kDa. ([Note](#))**Product Note** This antibody is specific for mouse Angiotensin 1 (mAng-1). Partially cross reactivity is noted with human angiotensin 2.

Properties

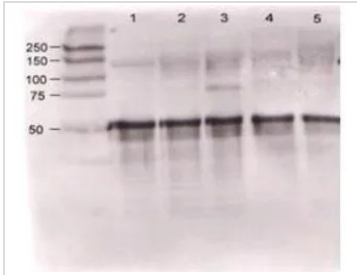
Form	Liquid
Buffer	20mM Potassium Phosphate, 150mM NaCl
Preservative	0.01% Sodium azide
Storage	Store as concentrated solution. Centrifuge briefly prior to opening vial. For short-term storage (1-2 weeks), store at 4°C. For long-term storage, aliquot and store at -20°C or below. Avoid multiple freeze-thaw cycles.
Concentration	80 mg/ml (Please refer to the vial label for the specific concentration.)
Immunogen	Synthetic peptide corresponding to a N-terminus region near aa 15-45 of mouse angiotensin 1 protein conjugated to KLH using maleimide.
Conjugation	Unconjugated

For full product information, images and publications, please visit our [website](#).

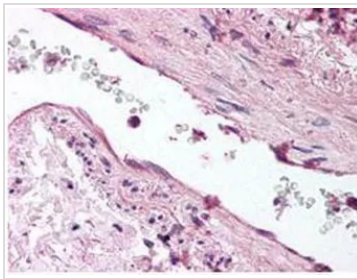
For laboratory research use only. Not for any clinical, therapeutic, or diagnostic use in humans or animals. Not for animal or human consumption.

Note

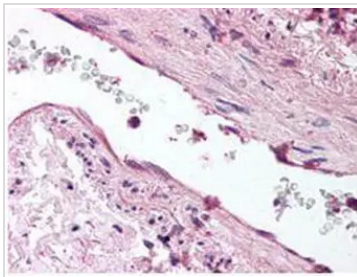
Purchasers shall not, and agree not to enable third parties to, analyze, copy, reverse engineer or otherwise attempt to determine the structure or sequence of the product.

DATA IMAGES

GTX28451 WB Image

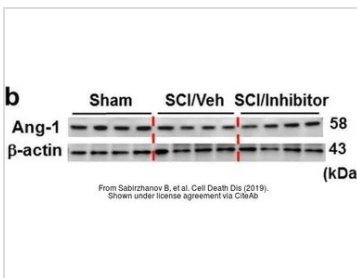
Rabbit anti-Ang-1 (GTX28451) was used at a 1:500 dilution to detect mouse Ang-1 by western blot against supernatants of mouse angiopoietin-expressing endothelial cells. Lane 1 - wt endothelial cells. Lane 2 - mouse Ang-1 (clone 1-8) expressing cells. Lane 3 - mouse Ang-1 (clone 1-15) expressing cells. Lane 4 - mouse Ang-2 (clone 2-9) expressing cells. Approximately 20 µg of each lysate was used for 10% SDS-PAGE.


GTX28451 IHC-P Image

IHC-P of ANG1 antibody was diluted 1:500 to detect ANG1 in human lung tissue. The image shows the localization of antibody as the precipitated red signal, with a hematoxylin purple nuclear counter stain.


GTX28451 IHC-P Image

IHC-P analysis of human lung tissue using GTX28451 Angiopoietin 1 antibody.
Dilution : 1:500


GTX28451 WB Image

The data was published in the journal Cell Death Dis in 2019. [PMID: 31685802](https://pubmed.ncbi.nlm.nih.gov/31685802/)



For full product information, images and publications, please visit our [website](https://www.genetex.com).