

Angiotensin 2 antibody

Cat. No. GTX28452

Host	Rabbit
Clonality	Polyclonal
Isotype	IgG
Applications	WB, IHC-P, IP, Multiplexing
Reactivity	Human, Mouse

References (1)

Package

100 µl

Applications

Application Note

*Optimal dilutions/concentrations should be determined by the researcher.

Suggested dilution	Recommended dilution
WB	1:500-1:2000
IHC-P	1:200-1:500
IP	Assay dependent
Multiplexing	Assay dependent

Not tested in other applications.

Calculated MW 57 kDa. ([Note](#))**Product Note** This antibody is specific for mouse Angiotensin 2 (mAng-2). Partially cross-reactivity is noted with human angiotensin-1

Properties

Form	Liquid
Buffer	20mM Potassium Phosphate, 150mM NaCl
Preservative	0.1% Sodium azide
Storage	Store as concentrated solution. Centrifuge briefly prior to opening vial. For short-term storage (1-2 weeks), store at 4°C. For long-term storage, aliquot and store at -20°C or below. Avoid multiple freeze-thaw cycles.
Concentration	80 mg/ml (Please refer to the vial label for the specific concentration.)
Immunogen	Synthetic peptide, corresponding to a region near the N-terminus of mouse angiotensin-2 protein, conjugated to KLH using maleimide.
Purification	Unpurified From serum
Conjugation	Unconjugated

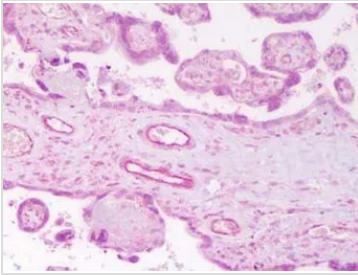


For full product information, images and publications, please visit our [website](#).

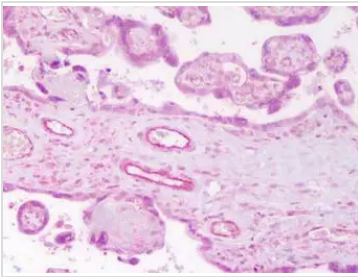
For laboratory research use only. Not for any clinical, therapeutic, or diagnostic use in humans or animals. Not for animal or human consumption.

Note
Purchasers shall not, and agree not to enable third parties to, analyze, copy, reverse engineer or otherwise attempt to determine the structure or sequence of the product.

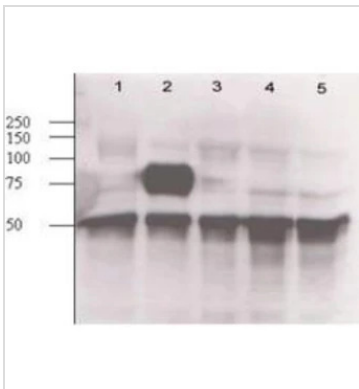
DATA IMAGES

**GTX28452 IHC-P Image**

IHC-P of anti-ANG2 Antibody (GTX28452) in human placenta tissue. Antigen Retrieval: Heat, Citrate pH 6.2. Pressure Cooker Primary antibody: 2ug/ml for 1.5 hour RT.

**GTX28452 IHC-P Image**

IHC-P analysis of human placenta tissue using GTX28452 Angiopoietin 2 antibody. Antigen retrieval : Head mediated citrate buffer (pH 6.2) Dilution : 2 µg/mL

**GTX28452 WB Image**

WB analysis of mouse-angiopoietin-expressing endothelial whole cell lysate using GTX28452 Angiopoietin 2 antibody.

Lane 1 : Mock

Lane 2 : Mouse Arg2 expressing whole cell lysate

Lane 3 : Mouse Arg1 (clone 1-15) expressing whole cell lysate

Lane 4 : Mouse Arg1 (clone 1-8) expression whole cell lysate

Lane 5 : Wild type

Loading : 20 µg

Dilution : 1:500



For full product information, images and publications, please visit our [website](#).