

EpCAM antibody [VU-1D9]

Cat. No. GTX28667

Host	Mouse
Clonality	Monoclonal
Isotype	IgG1
Applications	WB, ICC/IF, IHC-P, FCM
Reactivity	Human

References (10)

Package

250 µl

Applications

Application Note

*Optimal dilutions/concentrations should be determined by the researcher.

Suggested dilution	Recommended dilution
WB	Assay dependent
ICC/IF	Assay dependent
IHC-P	1-2 µg/ml
FCM	Assay dependent

Note : Digestion of tissue sections with pepsin at 1 mg/ml Tris-HCl (pH 2.0) for 15 min at RT or 10 min at 37°C.

Not tested in other applications.

Calculated MW 35 kDa. ([Note](#))

Product Note We do not recommend use of this product for Rat samples.

Properties

Form	Liquid
Buffer	PBS, 0.2% BSA
Preservative	0.09% Sodium azide
Storage	Store as concentrated solution. Centrifuge briefly prior to opening vial. Store at 4°C.
Concentration	200 µg/ml (Please refer to the vial label for the specific concentration.)
Immunogen	Small cell lung carcinoma cells
Purification	Protein G purified
Conjugation	Unconjugated



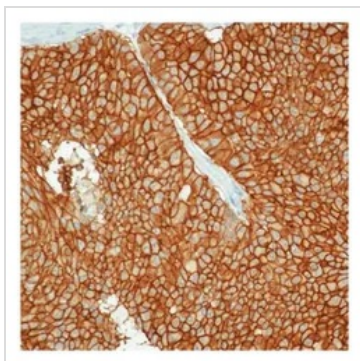
For full product information, images and publications, please visit our [website](#).

For laboratory research use only. Not for any clinical, therapeutic, or diagnostic use in humans or animals. Not for animal or human consumption.

Note

Purchasers shall not, and agree not to enable third parties to, analyze, copy, reverse engineer or otherwise attempt to determine the structure or sequence of the product.

DATA IMAGES



GTx28667 IHC-P Image

IHC-P analysis of human breast carcinoma tissue using GTx28667 EpCAM antibody [VU-1D9].



For full product information, images and publications, please visit our [website](#).