

## AKT antibody

Cat. No. GTX28805

<b>Host</b>	Rabbit
<b>Clonality</b>	Polyclonal
<b>Isotype</b>	IgG
<b>Applications</b>	WB, ICC/IF, IHC-P, FCM, ELISA
<b>Reactivity</b>	Human, Mouse, Rat, Chicken

References ( 6 )

Package

100 µl

## Applications

## Application Note

\*Optimal dilutions/concentrations should be determined by the researcher.

Suggested dilution	Recommended dilution
WB	1:500-1:2000
ICC/IF	1:100-1:1000
IHC-P	1:500-1:2000
FCM	Assay dependent
ELISA	1:2000-1:10000

Not tested in other applications.

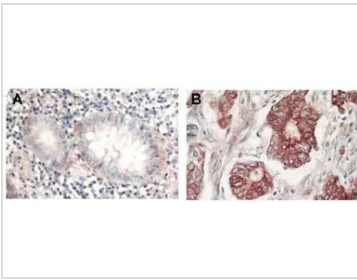
## Properties

<b>Form</b>	Liquid
<b>Buffer</b>	20mM Potassium Phosphate, 150mM NaCl
<b>Preservative</b>	0.01% Sodium azide
<b>Storage</b>	Store as concentrated solution. Centrifuge briefly prior to opening vial. For short-term storage (1-2 weeks), store at 4°C. For long-term storage, aliquot and store at -20°C or below. Avoid multiple freeze-thaw cycles.
<b>Concentration</b>	85 mg/ml (Please refer to the vial label for the specific concentration.)
<b>Immunogen</b>	Synthetic peptide RPHFPQFSYSASGTA corresponding to the Cterminus (460-480) of human AKT proteins conjugated to KLH using maleimide.
<b>Conjugation</b>	Unconjugated
<b>Note</b>	For laboratory research use only. Not for any clinical, therapeutic, or diagnostic use in humans or animals. Not for animal or human consumption.  Purchasers shall not, and agree not to enable third parties to, analyze, copy, reverse engineer or otherwise attempt to determine the structure or sequence of the product.



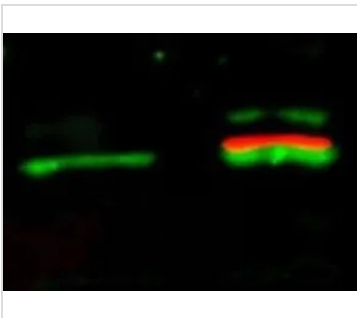
For full product information, images and publications, please visit our [website](#).

## DATA IMAGES



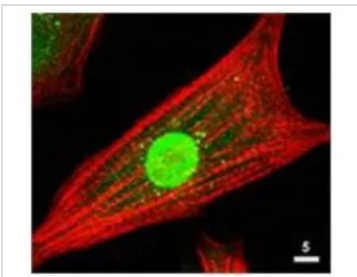
**GTX28805 IHC-P Image**

Immunohistochemical analysis of formalin-fixed paraffin-embedded tissue, A: Normal colon tissue, B: Colon tumor tissue, using AKT(GTX28805) antibody at 1:1,000 dilution for 1 h at RT. Peroxidase rabbit secondary antibody at 1:10,000 for 45 min at RT. Localization: AKT is nuclear. Staining: AKT as precipitated red signal with hematoxylin purple nuclear counterstain.



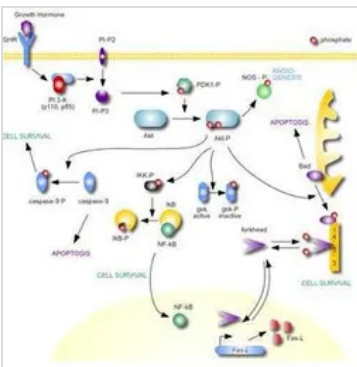
**GTX28805 WB Image**

Western Blot of simultaneous detection of unphosphorylated and phosphorylated Rabbit Anti-AKT antibody (GTX28805). Lane 1: unstimulated NIH/3T3 lysates contain inactive unphosphorylated Akt1, green band. Lane 2: PDGF stimulated NIH/3T3 lysate contains both inactive (green band) and activated phosphorylated Akt1 (red band). Load: 35  $\mu$ g per lane. Primary antibody: rabbit anti-Akt (pan) and mouse anti-Akt pS473 specific antibodies at 1:1000 for overnight at 4°C. Secondary antibody: Fluorescent 549 conjugated anti-rabbit IgG (green) and fluorescent 649 conjugated anti-mouse IgG (red) secondary antibodies at 1:10,000 for 45 min at RT.



**GTX28805 ICC/IF Image**

ICC/IF of the Akt antibody is used at 1: 80 for 1hr at RT on cultured neonatal rat cardiomyocytes (Green). The red is Texas-red phalloidin that labels actin filaments.



**GTX28805 Image**



For full product information, images and publications, please visit our [website](#).