

## NOTCH2 antibody

Cat. No. GTX28927

<b>Host</b>	Rabbit
<b>Clonality</b>	Polyclonal
<b>Isotype</b>	IgG
<b>Applications</b>	WB, ICC/IF, IHC-P, ELISA, Multiplexing
<b>Reactivity</b>	Human

Package  
100 µl

## Applications

## Application Note

\*Optimal dilutions/concentrations should be determined by the researcher.

Suggested dilution	Recommended dilution
WB	1:400-1:2000
ICC/IF	Assay dependent
IHC-P	1:200-1:800
ELISA	1:30000-1:90000
Multiplexing	Assay dependent

Not tested in other applications.

**Calculated MW** 265 kDa. ([Note](#))

## Properties

<b>Form</b>	Liquid
<b>Buffer</b>	20mM Potassium Phosphate, 150mM NaCl
<b>Preservative</b>	0.1% Sodium azide
<b>Storage</b>	Store as concentrated solution. Centrifuge briefly prior to opening vial. For short-term storage (1-2 weeks), store at 4°C. For long-term storage, aliquot and store at -20°C or below. Avoid multiple freeze-thaw cycles.
<b>Concentration</b>	75 mg/ml (Please refer to the vial label for the specific concentration.)
<b>Immunogen</b>	Synthetic peptide corresponding to an internal region near amino acid residues 2390-2415 of human Notch 2 (the total protein is 2471 aa).
<b>Conjugation</b>	Unconjugated



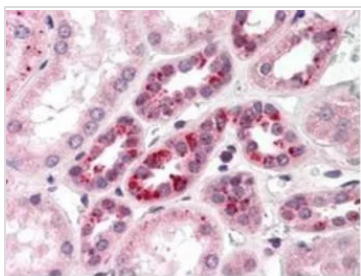
For full product information, images and publications, please visit our [website](#).

For laboratory research use only. Not for any clinical, therapeutic, or diagnostic use in humans or animals. Not for animal or human consumption.

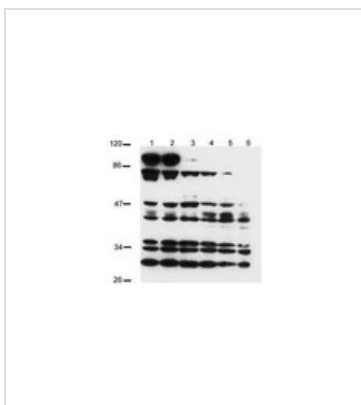
**Note**

Purchasers shall not, and agree not to enable third parties to, analyze, copy, reverse engineer or otherwise attempt to determine the structure or sequence of the product.

## DATA IMAGES

**GTX28927 IHC-P Image**

IHC-P analysis of human kidney tissue using Notch 2 antibody at a dilution of 1:500. The image shows the localization of antibody as the precipitated red signal, with a hematoxylin purple nuclear counter stain.

**GTX28927 WB Image**

WB analysis of Non-transfected (lane 4-6) and transfected (lane 1-3) SV40 whole cell lysate using GTX28927 NOTCH2 antibody.

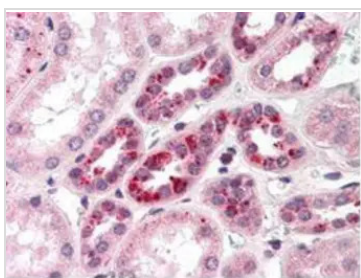
Lane 1 and 3 : Lysate 24 hr post transfection

Lane 2 and 5 : Lysate 48 hr post transfection

Lane 3 and 6 : Lysate 72 hr post transfection

Loading : 100 µg

Dilution : 1:400

**GTX28927 IHC-P Image**

IHC-P analysis of human kidney tissue using GTX28927 NOTCH2 antibody.

Dilution : 1:500



For full product information, images and publications, please visit our [website](#).