

## AKT (phospho Ser473) antibody

Cat. No. GTX28932

Host	Rabbit
Clonality	Polyclonal
Isotype	IgG
Applications	WB, ICC/IF, IHC-P, IHC-Fr
Reactivity	Human, Mouse

References ( 15 )

Package

100 µg

## Applications

## Application Note

For IHC-P: Use at a dilution of 1:100 - 1:500. No pre-treatment is required. For WB: Use at a dilution of 1:200 - 1:1,000. Optimal dilutions/concentrations should be determined by the researcher.

Calculated MW 56 kDa. ( [Note](#) )

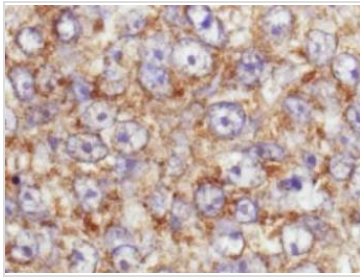
## Properties

Form	Liquid
Buffer	Phosphate-buffered saline, pH 7.3, 50% Glycerol and 150mM NaCl containing 0.02% sodium azide
Storage	Store as concentrated solution. Centrifuge briefly prior to opening vial. For short-term storage (1-2 weeks), store at 4°C. For long-term storage, aliquot and store at -20°C or below. Avoid multiple freeze-thaw cycles.
Concentration	1 mg/ml (Please refer to the vial label for the specific concentration.)
Immunogen	Synthetic peptide: CHFPQFS <sub>p</sub> YSAS conjugated to KLH, corresponding to amino acids 460-480 of Human AKT.
Purification	Immunogen affinity purified This product was prepared from monospecific antiserum by immunoaffinity chromatography using phospho peptide coupled to agarose beads followed by solid phase adsorption(s) against non-phospho peptide and non-specific peptide to remove any unwanted reactiv
Conjugation	Unconjugated
Note	For laboratory research use only. Not for any clinical, therapeutic, or diagnostic use in humans or animals. Not for animal or human consumption.  Purchasers shall not, and agree not to enable third parties to, analyze, copy, reverse engineer or otherwise attempt to determine the structure or sequence of the product.



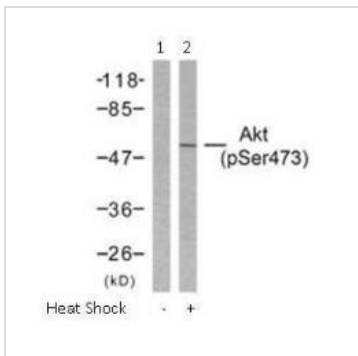
For full product information, images and publications, please visit our [website](#).

DATA IMAGES



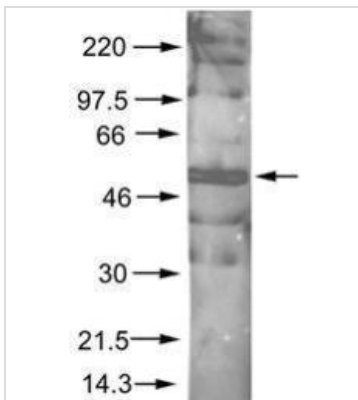
**GTX28932 IHC-P Image**

This image is a magnification of the accompanying breast tumor image.



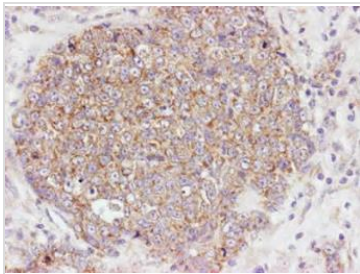
**GTX28932 WB Image**

Western blot analysis of extract from HeLa cells untreated or treated with heat shock using Akt (phospho-Ser473) antibody (GTX28932, Lane 1 and 2).



**GTX28932 WB Image**

Rabbit anti-AKT pS473 was used at a 1:200 dilution to detect phosphorylated AKT by Western blot. A nuclear extract from cells infected with adenovirus expressing nuclear-targeted AKT kinase was used.



**GTX28932 IHC-P Image**

Rabbit anti-AKT pS473 was used at a 1:100 dilution to detect AKT by immunohistochemistry in human breast tumor tissue.

The staining is much stronger than the weak basal level of phosphorylation in normal breast. Rabbit anti-AKT pS473 antibody was used with no pretreatment of tissue. Tissue was formalin-fixed and paraffin embedded.



For full product information, images and publications, please visit our [website](https://www.genetex.com).