

AKT (phospho Thr308) antibody

Cat. No. GTX28933

Host	Rabbit
Clonality	Polyclonal
Isotype	IgG
Applications	WB, IHC-P, FCM, Dot, ELISA
Reactivity	Human, Mouse, Rat

References (5)

Package

100 µg

Applications

Application Note

*Optimal dilutions/concentrations should be determined by the researcher.

Suggested dilution	Recommended dilution
WB	1:1000
IHC-P	1:200
FCM	Assay dependent
Dot	Assay dependent
ELISA	1:15000

Not tested in other applications.

Calculated MW 56 kDa. ([Note](#))**Product Note** This antibody is specific for phosphorylated human AKT. Minimal reactivity occurs against non-phosphorylated AKT.

Properties

Form	Liquid
Buffer	20mM Potassium Phosphate, 150mM NaCl
Preservative	0.01% Sodium azide
Storage	Store as concentrated solution. Centrifuge briefly prior to opening vial. For short-term storage (1-2 weeks), store at 4°C. For long-term storage, aliquot and store at -20°C or below. Avoid multiple freeze-thaw cycles.
Concentration	1 mg/ml (Please refer to the vial label for the specific concentration.)
Immunogen	A phosphorylated synthetic peptide corresponding to residues surrounding threonine 308 of human AKT1 protein.
Purification	Purified by antigen-affinity chromatography. From serum
Conjugation	Unconjugated

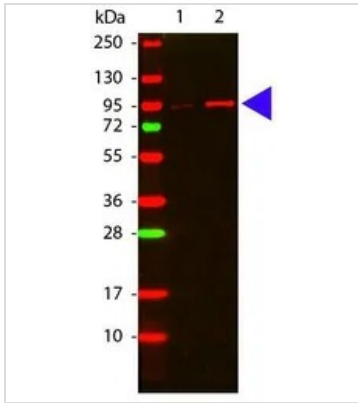


For full product information, images and publications, please visit our [website](#).

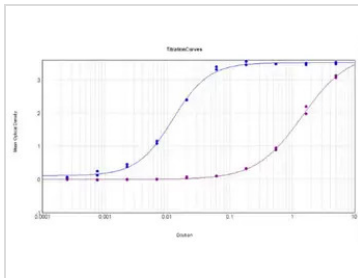
For laboratory research use only. Not for any clinical, therapeutic, or diagnostic use in humans or animals. Not for animal or human consumption.

Note

Purchasers shall not, and agree not to enable third parties to, analyze, copy, reverse engineer or otherwise attempt to determine the structure or sequence of the product.

DATA IMAGES

GTx28933 WB Image

Western Blot of Rabbit anti-Akt phospho T308 antibody (GTx28933). Lane 1: GST tagged AKT1 un-active recombinant protein. Lane 2: GST tagged AKT1 active recombinant protein. Load: 50 ng per lane. Primary antibody: Akt phospho T308 antibody at 1:1,000 for overnight at 4°C. Secondary antibody: DyLight™ 649 rabbit secondary antibody at 1:20,000 for 30 min at RT. Block for 30 min at RT. Other band(s): none.

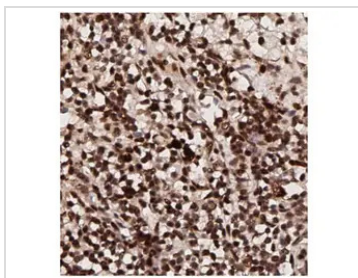

GTx28933 ELISA Image

ELISA analysis of Non-phospho and phospho peptide using serially diluted GTx28933 AKT (phospho Thr308) antibody.

Blue : Phospho

Purple : Non-phospho

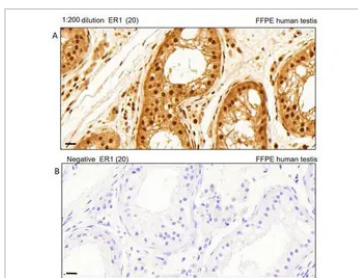
Coating : 0.1 µg


GTx28933 IHC-P Image

IHC-P analysis of human breast tissue using GTx28933 AKT (phospho Thr308) antibody.

Antigen retrieval : Heat mediated citrate buffer

Dilution : 1:200


GTx28933 IHC-P Image

IHC-P analysis of human testis tissue using GTx28933 AKT (phospho Thr308) antibody.

Antigen retrieval : Heat mediated Leica Bond Epitope Retrieval Buffer 1 (Citrate solution, pH 6)



For full product information, images and publications, please visit our [website](https://www.genetex.com).