

## CD47 antibody [MEM-122]

**Cat. No. GTX29089**

<b>Host</b>	Mouse
<b>Clonality</b>	Monoclonal
<b>Isotype</b>	IgM
<b>Applications</b>	WB, IHC-Fr, FCM
<b>Reactivity</b>	Human, Pig, Primate

**Package**  
100 µg

## Applications

**Application Note**

\*Optimal dilutions/concentrations should be determined by the researcher.

Suggested dilution	Recommended dilution
WB	Assay dependent
IHC-Fr	Assay dependent
FCM	Assay dependent

Not tested in other applications.

**Calculated MW** 35 kDa. ([Note](#))

**Product Note** The antibody reacts with an extracellular epitope of CD47.

## Properties

<b>Form</b>	Liquid
<b>Buffer</b>	TBS
<b>Preservative</b>	15mM Sodium azide
<b>Storage</b>	Store as concentrated solution. Centrifuge briefly prior to opening vial. Store at 4°C. DO NOT FREEZE.
<b>Concentration</b>	1 mg/ml (Please refer to the vial label for the specific concentration.)
<b>Immunogen</b>	COS-7 (African green monkey) cells
<b>Purification</b>	Purified by precipitation and chromatography
<b>Conjugation</b>	Unconjugated

**Note**

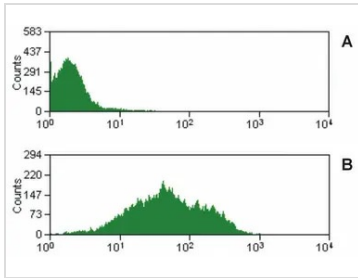
For laboratory research use only. Not for any clinical, therapeutic, or diagnostic use in humans or animals. Not for animal or human consumption.

Purchasers shall not, and agree not to enable third parties to, analyze, copy, reverse engineer or otherwise attempt to determine the structure or sequence of the product.



For full product information, images and publications, please visit our [website](#).

## DATA IMAGES

**GTX29089 FCM Image**

FACS analysis of pig peripheral blood using GTX29089 CD47 antibody [MEM-122]. Cells in the granulocyte gate were used for analysis.

Panel A : pig PBMC stained with Isotype mouse IgM control

Panel B : pig PBMC sample stained with GTX29089



For full product information, images and publications, please visit our [website](#).