

Myc tag antibody

Cat. No. GTX29106

Host	Rabbit
Clonality	Polyclonal
Isotype	IgG
Applications	WB, ICC/IF, IP, ELISA, IHC
Reactivity	Species independent

References (22)

Package

100 µl

Applications

Application Note

*Optimal dilutions/concentrations should be determined by the researcher.

Suggested dilution	Recommended dilution
WB	1:1,000- 1:25,000
ICC/IF	1:100-1:400
IP	Assay dependent
ELISA	1:1,000-1:30,000 (Detection) ; 1:100-1:500 (Coating)
IHC	Assay dependent

Not tested in other applications.

Properties

Form	Liquid
Buffer	1XPBS (pH7), 1% BSA, 20% Glycerol
Preservative	0.025% ProClin 300
Storage	Store as concentrated solution. Centrifuge briefly prior to opening vial. For short-term storage (1-2 weeks), store at 4°C. For long-term storage, aliquot and store at -20°C or below. Avoid multiple freeze-thaw cycles.
Concentration	0.18 mg/ml (Please refer to the vial label for the specific concentration.)
Immunogen	Amino acids 410-419 (EQKLISEEDL) of human myc conjugated to KLH.
Purification	Purified by antigen-affinity chromatography.
Conjugation	Unconjugated

Note

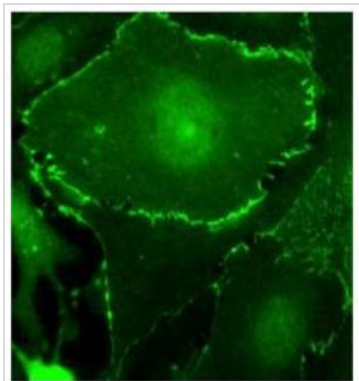
For laboratory research use only. Not for any clinical, therapeutic, or diagnostic use in humans or animals. Not for animal or human consumption.

Purchasers shall not, and agree not to enable third parties to, analyze, copy, reverse engineer or otherwise attempt to determine the structure or sequence of the product.



For full product information, images and publications, please visit our [website](#).

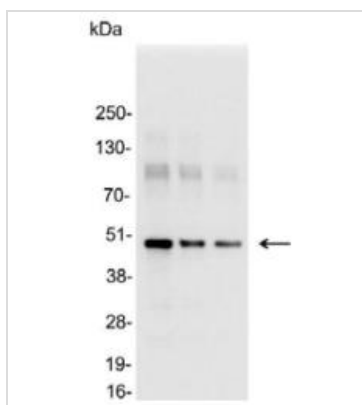
DATA IMAGES



GTx29106 ICC/IF Image

ICC/IF analysis of c-myc-tagged plakoglobin (gamma-catenin) on transiently transfected human microvascular endothelial cells using GTx29106 Myc tag antibody.

Dilution : 1µg/ml



GTx29106 WB Image

WB analysis of 200, 200, and 50ng of E. coli lysate containing tagged fusion protein using GTx29106 Myc tag antibody.

Dilution : 1:25000



For full product information, images and publications, please visit our [website](#).