

## V5 tag antibody

**Cat. No. GTX29137**

<b>Host</b>	Goat
<b>Clonality</b>	Polyclonal
<b>Isotype</b>	IgG
<b>Applications</b>	WB, ICC/IF, IP, ELISA, IHC
<b>Reactivity</b>	Species independent

References ( 1 )

Package

100 µg

### Applications

#### Application Note

\*Optimal dilutions/concentrations should be determined by the researcher.

Suggested dilution	Recommended dilution
WB	1:1,000- 1:20,000
ICC/IF	1:100-1:400
IP	1-4µg antibody/mg lysate
ELISA	1:1,000-1:30,000 (Detection) ; 1:100-1:500 (Coating)
IHC	Assay dependent

Not tested in other applications.

### Properties

<b>Form</b>	Liquid
<b>Buffer</b>	PBS
<b>Preservative</b>	0.09% Sodium azide
<b>Storage</b>	Store as concentrated solution. Centrifuge briefly prior to opening vial. Store at 4°C.
<b>Concentration</b>	1 mg/ml (Please refer to the vial label for the specific concentration.)
<b>Immunogen</b>	Synthetic peptide corresponding to aa 95-108 (GKPIPPLLGLDST) of RNA polymerase alpha subunit of simian virus 5 conjugated to KLH.
<b>Purification</b>	Purified by antigen-affinity chromatography
<b>Conjugation</b>	Unconjugated

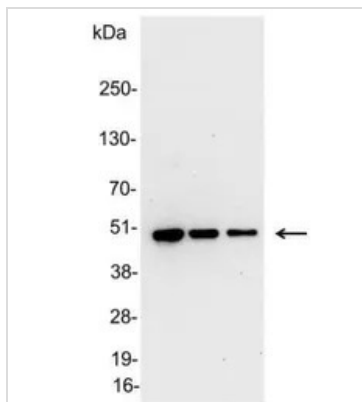
#### Note

For laboratory research use only. Not for any clinical, therapeutic, or diagnostic use in humans or animals. Not for animal or human consumption.

Purchasers shall not, and agree not to enable third parties to, analyze, copy, reverse engineer or otherwise attempt to determine the structure or sequence of the product.



For full product information, images and publications, please visit our [website](#).

**DATA IMAGES**

**GTX29137 WB Image**

WB analysis of 200, 100, and 50ng of E. coli lysate containing tagged fusion protein using GTX29137 V5 tag antibody.

Dilution : 1:25000



For full product information, images and publications, please visit our [website](#).