

CD6 antibody [MEM-98]

Cat. No. GTX29181

Host	Mouse
Clonality	Monoclonal
Isotype	IgG1
Applications	WB, IHC-P, FCM, IP
Reactivity	Human

Package
100 µg

Applications

Application Note

*Optimal dilutions/concentrations should be determined by the researcher.

Suggested dilution	Recommended dilution
WB	Assay dependent
IHC-P	Assay dependent
FCM	Assay dependent
IP	Assay dependent

Not tested in other applications.

Calculated MW 72 kDa. ([Note](#))

Properties

Form	Liquid
Buffer	PBS
Preservative	15mM Sodium azide
Storage	Store as concentrated solution. Centrifuge briefly prior to opening vial. Store at 4°C. DO NOT FREEZE.
Concentration	1 mg/ml (Please refer to the vial label for the specific concentration.)
Immunogen	Human CD6 antigen purified by immunoaffinity chromatography from HBP-ALL cells followed by preparative SDS-PAGE of non-boiled non-reduced sample (excised piece of gel corresponding to the 100 kDa zone).
Purification	Protein A purified
Conjugation	Unconjugated

Note

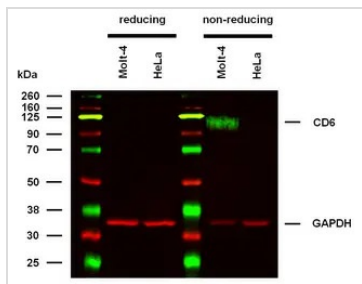
For laboratory research use only. Not for any clinical, therapeutic, or diagnostic use in humans or animals. Not for animal or human consumption.

Purchasers shall not, and agree not to enable third parties to, analyze, copy, reverse engineer or otherwise attempt to determine the structure or sequence of the product.



For full product information, images and publications, please visit our [website](#).

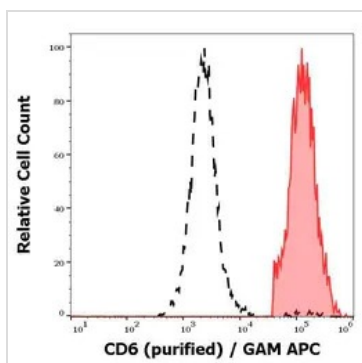
DATA IMAGES



GTX29181 WB Image

WB analysis of various sample lysates using GTX29181 CD6 antibody [MEM-98]. GTX29181 CD6 antibody [MEM-98] detected CD6 molecules at ~100 kDa in Molt-4 cell line under non-reducing conditions.

Dilution: 1 µg/ml



GTX29181 FCM Image

FACS analysis of human peripheral whole blood using GTX29181 CD6 antibody [MEM-98].

Red-filled : Primary antibody (human CD6 positive lymphocytes)

Black-dashed :Neutrophil granulocytes

Dilution : 2 µg/ml



For full product information, images and publications, please visit our [website](#).