

CD59 antibody [MEM-43/5]

Cat. No. GTX29183

Host	Mouse
Clonality	Monoclonal
Isotype	IgG2b
Applications	WB, IHC-P, FCM, IP
Reactivity	Human, Mouse

References (1)

Package

100 µg

Applications

Application Note

*Optimal dilutions/concentrations should be determined by the researcher.

Suggested dilution	Recommended dilution
WB	Assay dependent
IHC-P	Assay dependent
FCM	Assay dependent
IP	Assay dependent

Not tested in other applications.

Calculated MW 14 kDa. ([Note](#))

Product Note This antibody reacts with well defined epitope (around L33) on CD59 (Protectin). The MEM-43/5 does not compete with most other CD59 antibodies.

Properties

Form	Liquid
Buffer	PBS
Preservative	15mM Sodium azide
Storage	Store as concentrated solution. Centrifuge briefly prior to opening vial. Store at 4°C. DO NOT FREEZE.
Concentration	1 mg/ml (Please refer to the vial label for the specific concentration.)
Immunogen	Thymocytes and T lymphocytes
Purification	Protein A purified
Conjugation	Unconjugated



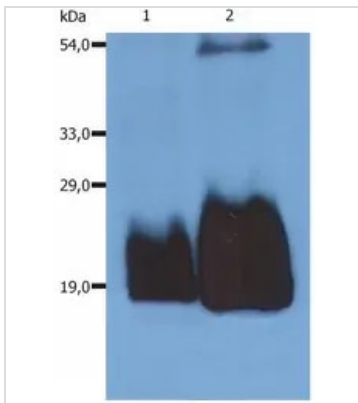
For full product information, images and publications, please visit our [website](#).

For laboratory research use only. Not for any clinical, therapeutic, or diagnostic use in humans or animals. Not for animal or human consumption.

Note

Purchasers shall not, and agree not to enable third parties to, analyze, copy, reverse engineer or otherwise attempt to determine the structure or sequence of the product.

DATA IMAGES



GTX29183 WB Image

WB analysis of HPB-ALL cell lysate (non-reducing) using GTX29183 CD59 antibody [MEM-43/5].

Lane 1 : Original cell lysate

Lane 2 : Immunoprecipitate by GTX29182



For full product information, images and publications, please visit our [website](#).