

## CD48 antibody [MEM-102]

Cat. No. GTX29185

Host	Mouse
Clonality	Monoclonal
Isotype	IgG1
Applications	WB, IHC-P, FCM, IP
Reactivity	Human, Primate

Package  
100 µg

## Applications

## Application Note

\*Optimal dilutions/concentrations should be determined by the researcher.

Suggested dilution	Recommended dilution
WB	Assay dependent
IHC-P	Assay dependent
FCM	Assay dependent
IP	Assay dependent

Not tested in other applications.

Calculated MW 28 kDa. ( [Note](#) )

## Properties

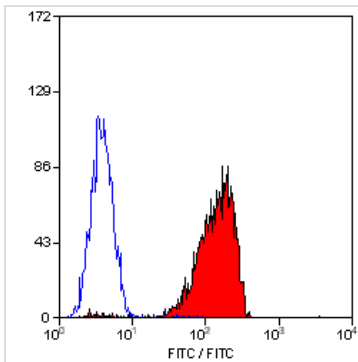
Form	Liquid
Buffer	PBS
Preservative	15mM Sodium azide
Storage	Store as concentrated solution. Centrifuge briefly prior to opening vial. Store at 4°C. DO NOT FREEZE.
Concentration	1 mg/ml (Please refer to the vial label for the specific concentration.)
Immunogen	Raji human Burkitt's lymphoma cell line
Purification	Protein A purified
Conjugation	Unconjugated

## Note

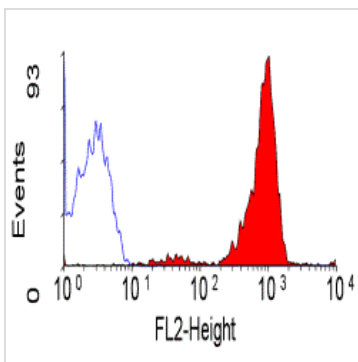
For laboratory research use only. Not for any clinical, therapeutic, or diagnostic use in humans or animals. Not for animal or human consumption.

Purchasers shall not, and agree not to enable third parties to, analyze, copy, reverse engineer or otherwise attempt to determine the structure or sequence of the product.

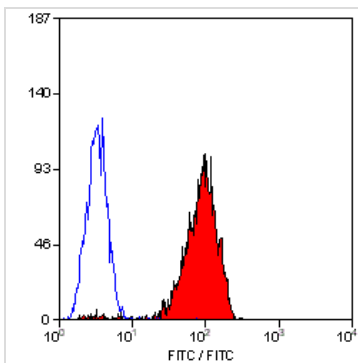
For full product information, images and publications, please visit our [website](#).

**DATA IMAGES**

**GTX29185 FCM Image**

Staining of human peripheral blood lymphocytes with Mouse anti Human CD48 (GTX29185)


**GTX29185 FCM Image**

Staining of human peripheral blood lymphocytes with Mouse anti Human CD48:RPE (GTX74614)


**GTX29185 FCM Image**

Staining of human peripheral blood lymphocytes with Mouse anti Human CD48:FITC (GTX74612)



For full product information, images and publications, please visit our [website](https://www.genetex.com).