

TCR alpha + TCR beta antibody [R73] (Low endotoxin, azide free)

Cat. No. GTX29314

| | |
|--------------|--------------------------------|
| Host | Mouse |
| Clonality | Monoclonal |
| Isotype | IgG1 |
| Applications | IHC-Fr, FCM, IP, Activation |
| Reactivity | Rat, Monkey, Cynomolgus monkey |

Package
125 µg

Applications

Application Note

*Optimal dilutions/concentrations should be determined by the researcher.

| Suggested dilution | Recommended dilution |
|--------------------|----------------------|
| IHC-Fr | 1/10-1/100 |
| FCM | 1/50-1/100 |
| IP | Assay dependent |
| Activation | Assay dependent |

Note : Use 10µl of the suggested working dilution to label 10⁶ cells or 100µl whole blood.

Mouse anti Rat TCR alpha/beta antibody, clone R73 is reported to stimulate adhesion between Thymic Dendritic Cells and Thymocytes (Colic et al. 2010).

Not tested in other applications.

Product Note This antibody recognizes a constant determinant on the beta chain of the rat alpha/beta T cell receptor.

Properties

| | |
|---------------|--|
| Form | Liquid |
| Buffer | PBS |
| Preservative | No preservatives |
| Storage | Store as concentrated solution. Centrifuge briefly prior to opening vial. For short-term storage (1-2 weeks), store at 4°C. For long-term storage, aliquot and store at -20°C or below. Avoid multiple freeze-thaw cycles. |
| Concentration | 1.0 mg/ml (Please refer to the vial label for the specific concentration.) |
| Immunogen | Rat T Blasts and Erythrocytes. |
| Purification | Protein G purified From tissue culture supernatant |
| Endotoxin | < 0.01 EU/µg (determined by the LAL assay) |



For full product information, images and publications, please visit our [website](#).

Date 2025 / 09 / 27 Page 1 of 2

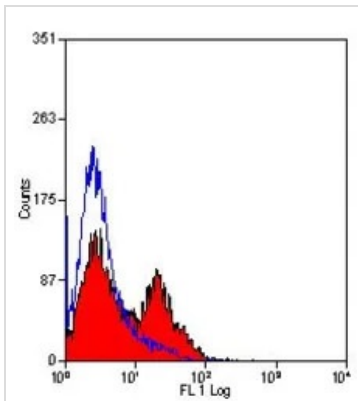
Conjugation

Unconjugated

Note

For laboratory research use only. Not for any clinical, therapeutic, or diagnostic use in humans or animals. Not for animal or human consumption.

Purchasers shall not, and agree not to enable third parties to, analyze, copy, reverse engineer or otherwise attempt to determine the structure or sequence of the product.

DATA IMAGES

GTX29314 FCM Image

FACS analysis of rat spleen cells using GTX29314 TCR alpha + beta antibody [R73] (Low endotoxin, azide free).



For full product information, images and publications, please visit our [website](#).