

# Phosphoserine antibody (Biotin)

**Cat. No. GTX29335**

<b>Host</b>	Rabbit
<b>Clonality</b>	Polyclonal
<b>Isotype</b>	IgG
<b>Applications</b>	WB, IP, ELISA
<b>Reactivity</b>	Species independent

**Package**  
50 µg

## Applications

### Application Note

For ELISA: Use at a concentration of 0.5 µg/mL. For WB: Use at a concentration of 4µg/mL. For IP: Use at a concentration of 10 µg/250 µg chromatography fractionated protein sample. Detects 50 ng of phosvitin with immunoblotting and 0.5 ng of phosvitin with immunocaptured ELISA. Do not use milk as a blocking agent or in diluents, as milk casein is phosphorylated at several serine residues. BSA is recommended instead. Optimal dilutions/concentrations should be determined by the researcher.

### Product Note

Specifically recognizes both free-phosphoserine, serine-phosphorylated peptide and proteins. Does not cross-react with ATP, phosphotyrosine, peptidyl phosphothreonine and serine. Slight cross-reactivity with free phosphothreonine. Readily reacts to known phosphoproteins such as phosvitin and alpha casein.

## Properties

<b>Form</b>	Liquid
<b>Buffer</b>	PBS
<b>Preservative</b>	0.02% Sodium azide
<b>Storage</b>	Store as concentrated solution. Centrifuge briefly prior to opening vial. Store at 4°C. DO NOT FREEZE.
<b>Concentration</b>	0.25 mg/ml (Please refer to the vial label for the specific concentration.)
<b>Immunogen</b>	BSA and KLH-phosphoserine conjugates.
<b>Purification</b>	Immunogen affinity purified Immunoaffinity chromatography with phosphoserine-agarose.
<b>Conjugation</b>	Biotin

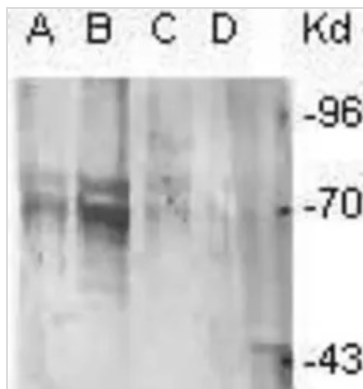
### Note

For laboratory research use only. Not for any clinical, therapeutic, or diagnostic use in humans or animals. Not for animal or human consumption.

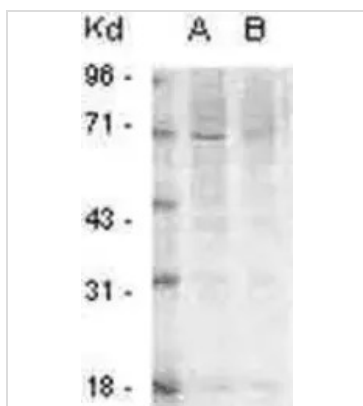
Purchasers shall not, and agree not to enable third parties to, analyze, copy, reverse engineer or otherwise attempt to determine the structure or sequence of the product.



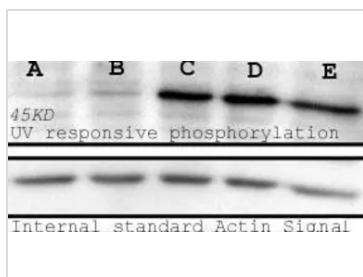
For full product information, images and publications, please visit our [website](#).

**DATA IMAGES**

**GTx29335 WB Image**

Immunoblotting of BSA-S6 peptide phosphorylated by partial purified S6K with anti-phosphoserine. S6 peptide (CKRRRLASLR) coupled to BSA was phosphorylated with calf-brain S6K for 2, 10, 30, and 60 min, lane A,B,C,D, respectively.


**GTx29335 WB Image**

Immunoblotting of fetal mouse brain extract (125 ug - A and 25 ug - B)


**GTx29335 WB Image**

The detected band is 53 kD, and is a similar size to the p53 tumor suppressor factor. The cells were treated with 0, 50, 200 or 400 J UV (lane A to D, respectively) and with 0.1 uM of okadaic acid (lane E).



For full product information, images and publications, please visit our [website](https://www.genetex.com).