

beta Galactosidase antibody

Cat. No. GTX29361

Host	Chicken
Clonality	Polyclonal
Isotype	IgY
Applications	WB, ICC/IF, ELISA, IHC
Reactivity	E. coli

References (2)

Package

250 µg

Applications

Application Note

*Optimal dilutions/concentrations should be determined by the researcher.

Suggested dilution	Recommended dilution
WB	Assay dependent
ICC/IF	10 - 2 ug/ml
ELISA	Assay dependent
IHC	Assay dependent

Not tested in other applications.

Calculated MW 116 kDa. ([Note](#))

Properties

Form	Liquid
Buffer	PBS
Preservative	0.1% Sodium azide
Storage	Store as concentrated solution. Centrifuge briefly prior to opening vial. Store at 4°C.
Concentration	1 mg/ml (Please refer to the vial label for the specific concentration.)
Immunogen	Full length native protein (purified) (E. coli).
Purification	Purified by antigen-affinity chromatography
Conjugation	Unconjugated

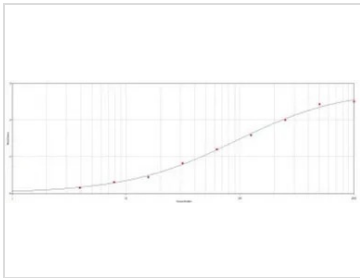
Note

For laboratory research use only. Not for any clinical, therapeutic, or diagnostic use in humans or animals. Not for animal or human consumption.

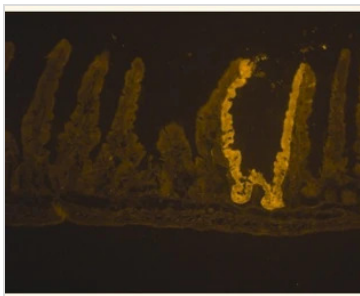
Purchasers shall not, and agree not to enable third parties to, analyze, copy, reverse engineer or otherwise attempt to determine the structure or sequence of the product.

For full product information, images and publications, please visit our [website](#).

DATA IMAGES

**GTX29361 ELISA Image**

ELISA analysis of immunogen using GTX29361 beta Galactosidase antibody.

**GTX29361 IHC Image**

IHC analysis of immunogen using GTX29361 beta Galactosidase antibody.



For full product information, images and publications, please visit our [website](#).