

# pan Cytokeratin antibody

**Cat. No. GTX29377**

<b>Host</b>	Rabbit
<b>Clonality</b>	Polyclonal
<b>Isotype</b>	IgG
<b>Applications</b>	ICC/IF, IHC-P
<b>Reactivity</b>	Human

References ( 6 )

Package

500 µl

## Applications

### Application Note

\*Optimal dilutions/concentrations should be determined by the researcher.

Suggested dilution	Recommended dilution
ICC/IF	Assay dependent
IHC-P	1:75-1:200

Not tested in other applications.

### Product Note

This antibody reacts with cytokeratins of 58, 56, 52, 60, 51, 48 and 68 kDa MW. This antibody is well suited for the staining of a broad spectrum of human keratins.

## Properties

<b>Form</b>	Liquid
<b>Buffer</b>	PBS
<b>Preservative</b>	0.09% Sodium azide
<b>Storage</b>	Store as concentrated solution. Centrifuge briefly prior to opening vial. Store at 4°C.
<b>Concentration</b>	Batch dependent (Please refer to the vial label for the specific concentration.)
<b>Immunogen</b>	Cytokeratin isolated from bovine muzzle epidermis.
<b>Purification</b>	Purified IgG
<b>Conjugation</b>	Unconjugated

### Note

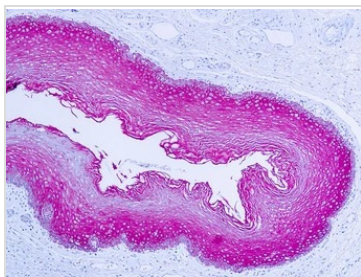
For laboratory research use only. Not for any clinical, therapeutic, or diagnostic use in humans or animals. Not for animal or human consumption.

Purchasers shall not, and agree not to enable third parties to, analyze, copy, reverse engineer or otherwise attempt to determine the structure or sequence of the product.



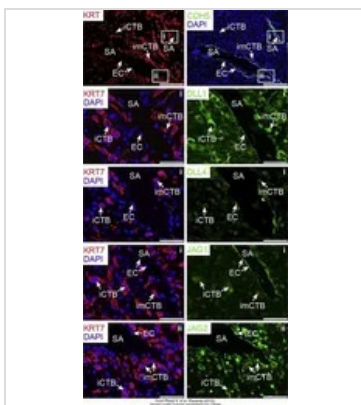
For full product information, images and publications, please visit our [website](#).

DATA IMAGES



**GTx29377 IHC-P Image**

IHC-P analysis of human skin tissue using GTx29377 pan Cytokeratin antibody .



**GTx29377 IHC-P Image**

The data was published in the journal Placenta in 2015. [PMID: 25659500](https://pubmed.ncbi.nlm.nih.gov/25659500/)



For full product information, images and publications, please visit our [website](https://www.genetex.com).