

sarcomeric alpha Actinin antibody [EA-53]

Cat. No. GTX29465

Host	Mouse
Clonality	Monoclonal
Isotype	IgG1
Applications	ICC/IF, IHC-P, IHC-Fr, IHC-Wm
Reactivity	Human, Mouse, Zebrafish

References (12)

★★★★★ Review (1)

Package

500 µl

Applications

Application Note

*Optimal dilutions/concentrations should be determined by the researcher.

Suggested dilution	Recommended dilution
ICC/IF	Assay dependent
IHC-P	1:20-1:30
IHC-Fr	Assay dependent
IHC-Wm	Assay dependent

Note : Recommendations for antigen retrieval : EDTA buffer pH 8.0

Not tested in other applications.

Product Note

This antibody is specific for α -skeletal muscle actinin and α -cardiac actinin. It stains Z lines and dots in stress fibers of myotubes in skeletal and cardiac muscle but not in non-sarcomeric muscle elements.

Properties

Form	Liquid
Buffer	Ascites
Preservative	0.09% Sodium azide
Storage	Store as concentrated solution. Centrifuge briefly prior to opening vial. Store at 4°C.
Immunogen	Purified rabbit skeletal α -actinin.
Purification	Unpurified
Conjugation	Unconjugated

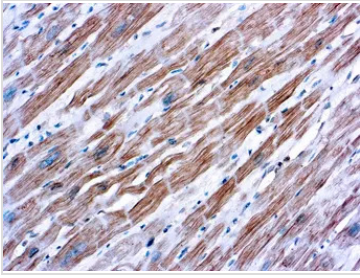
Note

For laboratory research use only. Not for any clinical, therapeutic, or diagnostic use in humans or animals. Not for animal or human consumption.

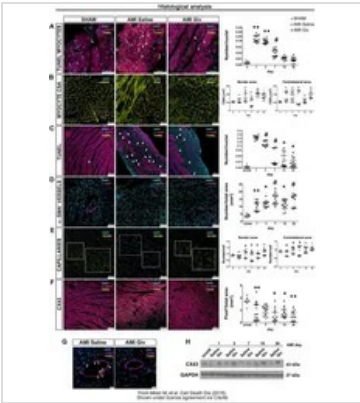
Purchasers shall not, and agree not to enable third parties to, analyze, copy, reverse engineer or otherwise attempt to determine the structure or sequence of the product.



For full product information, images and publications, please visit our [website](#).

DATA IMAGES

GTX29465 IHC-P Image

IHC-P analysis of human skeletal muscle tissue using GTX29465 sarcomeric alpha Actinin antibody [EA-53].


GTX29465 IHC-P Image

The data was published in the journal Cell Death Dis in 2018. [PMID: 29371598](https://pubmed.ncbi.nlm.nih.gov/29371598/)



For full product information, images and publications, please visit our [website](https://www.genetex.com).