

CD20 antibody [L26]

Cat. No. GTX29475

Host	Mouse
Clonality	Monoclonal
Isotype	IgG2a
Applications	ICC/IF, IHC-P, IHC-Fr
Reactivity	Human, Pig

References (5)

Package

250 µl

Applications

Application Note

*Optimal dilutions/concentrations should be determined by the researcher.

Suggested dilution	Recommended dilution
ICC/IF	Assay dependent
IHC-P	Assay dependent
IHC-Fr	Assay dependent

Not tested in other applications.

Product Note

This antibody is specific to a 33 kDa polypeptide present on the majority of B cells in peripheral blood and lymphoid tissue and also with a minor component of 30 kDa. No reactivity with other haematopoietic cells has been observed.

Properties

Form	Liquid
Buffer	Tissue culture supernatant
Preservative	0.09% Sodium azide
Storage	Store as concentrated solution. Centrifuge briefly prior to opening vial. Store at 4°C.
Concentration	Batch dependent (Please refer to the vial label for the specific concentration.)
Immunogen	Human tonsil B cells
Purification	Unpurified
Conjugation	Unconjugated

Note

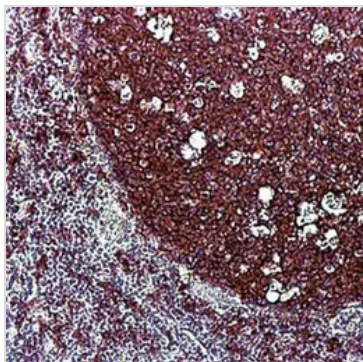
For laboratory research use only. Not for any clinical, therapeutic, or diagnostic use in humans or animals. Not for animal or human consumption.

Purchasers shall not, and agree not to enable third parties to, analyze, copy, reverse engineer or otherwise attempt to determine the structure or sequence of the product.



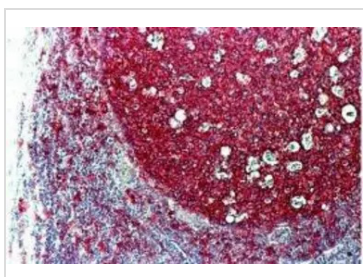
For full product information, images and publications, please visit our [website](#).

DATA IMAGES



GTx29475 IHC-P Image

Formalin fixed paraffin embedded human tonsil stained with CD20, B cell antibody (cat. # GTX71955).



GTx29475 IHC-P Image

GTx29475 - immunohistochemistry: Formalin fixed paraffin embedded human tonsil stained with CD20, B cell using ABC and Fast Red chromagen.



For full product information, images and publications, please visit our [website](#).