

Elastin antibody [BA-4]

Cat. No. GTX29519

Host	Mouse
Clonality	Monoclonal
Isotype	IgG1
Applications	WB, IHC-P, IHC
Reactivity	Human, Mouse

References (2)

Package

500 µl

Applications

Application Note

*Optimal dilutions/concentrations should be determined by the researcher.

Suggested dilution	Recommended dilution
WB	Assay dependent
IHC-P	1:50-1:100
IHC	Assay dependent

Not tested in other applications.

Product Note This antibody recognizes insoluble elastin, α -elastin, soluble non-cross linked precursor of elastin (tropoelastin).

Properties

Form	Liquid
Buffer	Ascites
Preservative	0.09% Sodium azide
Storage	Store as concentrated solution. Centrifuge briefly prior to opening vial. Store at 4°C.
Immunogen	Bovine α -elastin.
Purification	Unpurified
Conjugation	Unconjugated

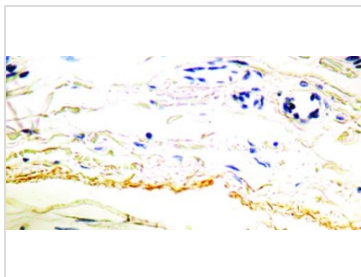
Note

For laboratory research use only. Not for any clinical, therapeutic, or diagnostic use in humans or animals. Not for animal or human consumption.

Purchasers shall not, and agree not to enable third parties to, analyze, copy, reverse engineer or otherwise attempt to determine the structure or sequence of the product.



For full product information, images and publications, please visit our [website](#).

DATA IMAGES

GTX29519 IHC-P Image

IHC-P analysis of human kidney tissue using GTX29519 Elastin antibody [BA-4].



For full product information, images and publications, please visit our [website](#).