

CD44 antibody [MEM-263]

Cat. No. GTX29524

Host	Mouse
Clonality	Monoclonal
Isotype	IgG1
Applications	WB, IHC-P, FCM, IP
Reactivity	Human, Dog, Pig

References (1)

Package

100 µg

Applications

Application Note

*Optimal dilutions/concentrations should be determined by the researcher.

Suggested dilution	Recommended dilution
WB	Assay dependent
IHC-P	Assay dependent
FCM	Assay dependent
IP	Assay dependent

Not tested in other applications.

Calculated MW 82 kDa. ([Note](#))

Product Note This antibody reacts with extracellular (N-terminal) domain of standard CD44 (Phagocyte glycoprotein 1).

Properties

Form	Liquid
Buffer	PBS
Preservative	15mM Sodium azide
Storage	Store as concentrated solution. Centrifuge briefly prior to opening vial. Store at 4°C. DO NOT FREEZE.
Concentration	1 mg/ml (Please refer to the vial label for the specific concentration.)
Immunogen	COS-7 cells (African Green Monkey).
Purification	Protein A purified
Conjugation	Unconjugated

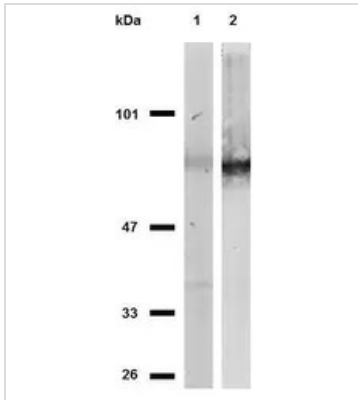


For full product information, images and publications, please visit our [website](#).

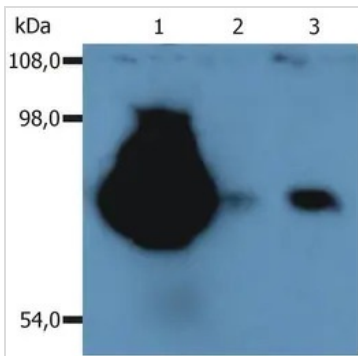
For laboratory research use only. Not for any clinical, therapeutic, or diagnostic use in humans or animals. Not for animal or human consumption.

Note

Purchasers shall not, and agree not to enable third parties to, analyze, copy, reverse engineer or otherwise attempt to determine the structure or sequence of the product.

DATA IMAGES

GTx29524 WB Image

WB analysis of MOLT-4 (lane 1) and HeLa (lane 2) cell lysates (non-reducing) using GTx29524 CD44 antibody [MEM-263].


GTx29524 WB Image

WB analysis of isolated peripheral blood lymphocytes (non-reducing) using GTx29524 CD44 antibody [MEM-263].

Lane 1: human PBL lysate

Lane 2 : dog PBL lysate

Lane 3 : pig PBL lysate



For full product information, images and publications, please visit our [website](https://www.genetex.com).