

PSA antibody

Cat. No. GTX29537

Host	Rabbit
Clonality	Polyclonal
Isotype	IgG
Applications	IHC-P, IHC-Fr
Reactivity	Human

Package
500 µl

Applications

Application Note

*Optimal dilutions/concentrations should be determined by the researcher.

Suggested dilution	Recommended dilution
IHC-P	Assay dependent
IHC-Fr	Assay dependent

Not tested in other applications.

Properties

Form	Liquid
Buffer	Rabbit immunoglobulin
Preservative	0.09% Sodium azide
Storage	Store as concentrated solution. Centrifuge briefly prior to opening vial. Store at 4°C.
Concentration	Batch dependent (Please refer to the vial label for the specific concentration.)
Immunogen	Prostate specific antigen isolated from human seminal plasma.
Purification	Purified IgG
Conjugation	Unconjugated

Note

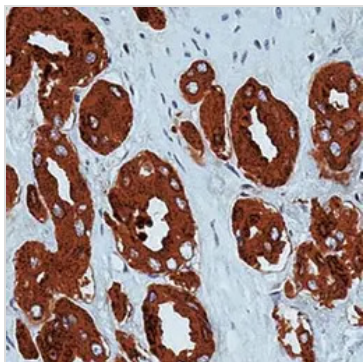
For laboratory research use only. Not for any clinical, therapeutic, or diagnostic use in humans or animals. Not for animal or human consumption.

Purchasers shall not, and agree not to enable third parties to, analyze, copy, reverse engineer or otherwise attempt to determine the structure or sequence of the product.



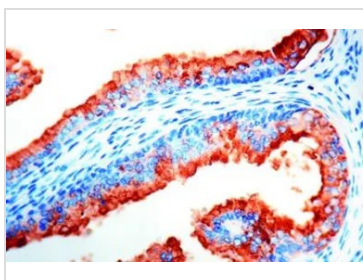
For full product information, images and publications, please visit our [website](#).

DATA IMAGES



GTX29537 IHC-P Image

Formalin fixed paraffin embedded human prostate stained with PSA antibody (cat. # GTX29537).



GTX29537 IHC-P Image

IHC-P analysis of prostate carcinoma using PSA antibody.



For full product information, images and publications, please visit our [website](#).