

Somatostatin receptor 2 antibody

Cat. No. GTX29550

Host	Rabbit
Clonality	Polyclonal
Isotype	IgG
Applications	WB, ICC/IF, IHC-P, IHC-Fr, FCM, IP
Reactivity	Human, Mouse, Rat

Package
100 µl

Applications

Application Note

*Optimal dilutions/concentrations should be determined by the researcher.

Suggested dilution	Recommended dilution
WB	1:100 - 1:1000
ICC/IF	1:100 - 1:250
IHC-P	1:100
IHC-Fr	1:100
FCM	Assay dependent
IP	1:10 - 1:500

Not tested in other applications.

Calculated MW 41 kDa. ([Note](#))

Properties

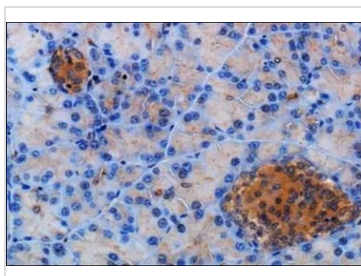
Form	Liquid
Buffer	Serum
Preservative	0.05% Sodium azide
Storage	Store as concentrated solution. Centrifuge briefly prior to opening vial. For short-term storage (1-2 weeks), store at 4°C. For long-term storage, aliquot and store at -20°C or below. Avoid multiple freeze-thaw cycles.
Immunogen	A synthetic peptide made to the C-terminus of rat Somatostatin Receptor 2 [UniProt# P30680]
Purification	Unpurified
Conjugation	Unconjugated

For full product information, images and publications, please visit our [website](#).

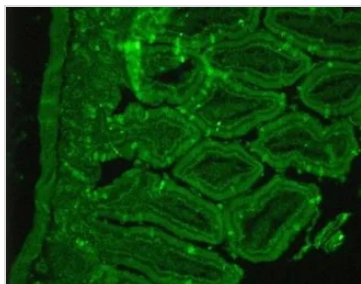
For laboratory research use only. Not for any clinical, therapeutic, or diagnostic use in humans or animals. Not for animal or human consumption.

Note

Purchasers shall not, and agree not to enable third parties to, analyze, copy, reverse engineer or otherwise attempt to determine the structure or sequence of the product.

DATA IMAGES

GTx29550 IHC-P Image

IHC-P analysis of mouse pancreas tissue using GTx29550 Somatostatin receptor 2 antibody.


GTx29550 IHC-P Image

IHC-P analysis of rat pancreas tissue using GTx29550 Somatostatin receptor 2 antibody.



For full product information, images and publications, please visit our [website](#).