

PUMA antibody

Cat. No. GTX29643

Host	Rabbit
Clonality	Polyclonal
Isotype	IgG
Application	WB, ICC/IF, ELISA
Reactivity	Human, Mouse

Reference (2)
Package
100 µg

APPLICATION

Application Note

*Optimal dilutions/concentrations should be determined by the researcher.

Suggested dilution	Recommended dilution
WB	2µg/ml
ICC/IF	1µg/ml
ELISA	Assay dependent

Not tested in other applications.

PROPERTIES

Form	Liquid
Buffer	PBS
Preservative	0.02% Sodium azide
Storage	Store as concentrated solution. Centrifuge briefly prior to opening vial. For short-term storage (1-2 weeks), store at 4°C. For long-term storage, aliquot and store at -20°C or below. Avoid multiple freeze-thaw cycles.
Concentration	Batch dependent (Please refer to the vial label for the specific concentration.)
Immunogen	Synthetic peptide corresponding to aa 180-193 of human PUMA-α (accession no NP_055232). This sequence is identical in human PUMA-α and PUMA-β.
Purification	Purified by affinity chromatography
Conjugation	Unconjugated

Note

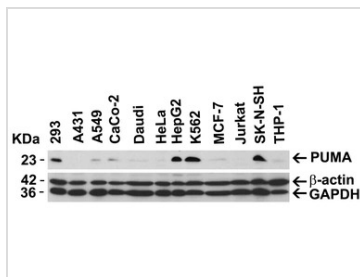
For laboratory research use only. Not for any clinical, therapeutic, or diagnostic use in humans or animals. Not for animal or human consumption.

Purchasers shall not, and agree not to enable third parties to, analyze, copy, reverse engineer or otherwise attempt to determine the structure or sequence of the product.



For full product information, images and publications, please visit our [website](#).

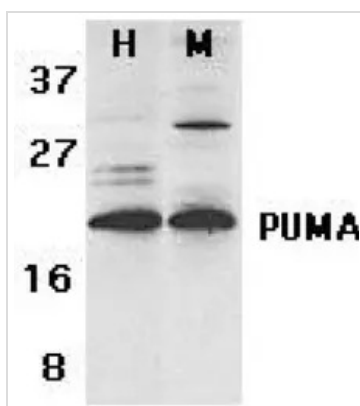
DATA IMAGES

**GTX29643 WB Image**

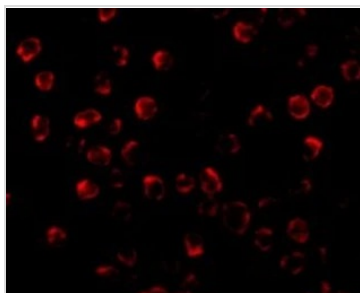
WB analysis of various sample lysates using GTX29643 PUMA antibody.

Loading : 20µg of lysates per lane

Dilution : 3 µg/ml

**GTX29643 WB Image**

Western blot analysis of PUMA in human (H) K562 and mouse (M) NIH/3T3 cell lysates with PUMA antibody (GTX29643) at 2µg/ml.

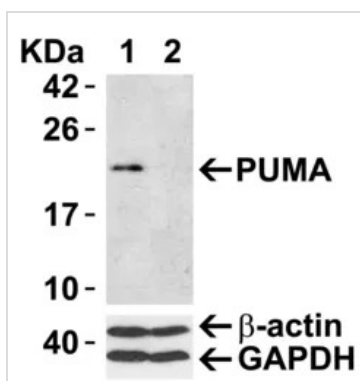
**GTX29643 ICC/IF Image**

ICC/IF analysis of K562 cells using GTX29643 PUMA antibody.

Red : Primary antibody

Fixation : 4% PFA

Dilution : 2 µg/ml

**GTX29643 WB Image**

WB analysis of 293 cells were transfected with control siRNAs (lane 1) or PUMA siRNAs (lane 2) using GTX29643 PUMA antibody.

Loading : 15µg of lysates per lane

Dilution : 2 µg/ml



For full product information, images and publications, please visit our [website](https://www.genetex.com).