

PUMA antibody

Cat. No. GTX29645

Host	Rabbit
Clonality	Polyclonal
Isotype	IgG
Application	WB, ICC/IF, IHC-P, ELISA
Reactivity	Human, Rat

Package
100 µg

APPLICATION

Application Note

*Optimal dilutions/concentrations should be determined by the researcher.

Suggested dilution	Recommended dilution
WB	2µg/ml
ICC/IF	Assay dependent
IHC-P	Assay dependent
ELISA	Assay dependent

Not tested in other applications.

PROPERTIES

Form	Liquid
Buffer	PBS
Preservative	0.02% Sodium azide
Storage	Store as concentrated solution. Centrifuge briefly prior to opening vial. For short-term storage (1-2 weeks), store at 4°C. For long-term storage, aliquot and store at -20°C or below. Avoid multiple freeze-thaw cycles.
Concentration	Batch dependent (Please refer to the vial label for the specific concentration.)
Immunogen	Synthetic peptide corresponding to aa 2-16 of human PUMA-α (accession no. NP_055232).. This sequence is identical in mouse PUMA-α.
Purification	Purified by affinity chromatography
Conjugation	Unconjugated

Note

For laboratory research use only. Not for any clinical, therapeutic, or diagnostic use in humans or animals. Not for animal or human consumption.

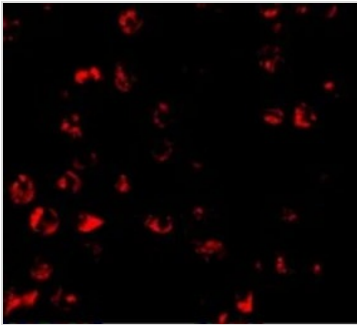
Purchasers shall not, and agree not to enable third parties to, analyze, copy, reverse engineer or otherwise attempt to determine the structure or sequence of the product.



For full product information, images and publications, please visit our [website](#).

Date 2024 / 05 / 18 Page 1 of 2

DATA IMAGES



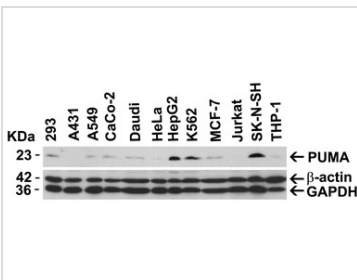
GTX29645 ICC/IF Image

ICC/IF analysis of K562 cells using GTX29645 PUMA antibody.

Red : Primary antibody

Fixation : 4% PFA

Dilution : 10 µg/ml

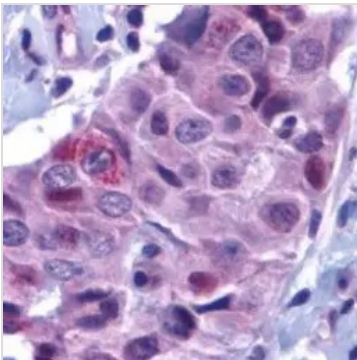


GTX29645 WB Image

WB analysis of various sample lysates using GTX29645 PUMA antibody.

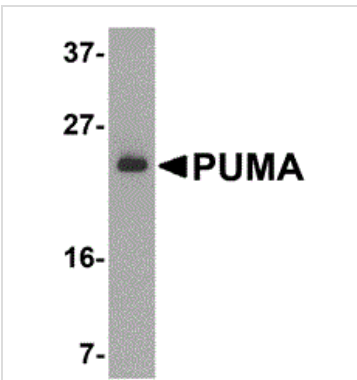
Loading : 20µg of lysates per lane

Dilution : 2 µg/ml



GTX29645 IHC-P Image

Staining of human breast carcinoma. Formalin fixed paraffin processed tissue with Rabbit anti Human PUMA (NT) at 10 ug/ml (GTX29645)



GTX29645 WB Image

Western blot analysis of whole cell lysate from K562 cells probed with Rabbit anti Human PUMA binding component 3 (GTX29645)



For full product information, images and publications, please visit our [website](https://www.genetex.com).