

CARD9 antibody

Cat. No. GTX29649

Host	Rabbit
Clonality	Polyclonal
Isotype	IgG
Applications	WB, ICC/IF
Reactivity	Human

Package
100 µg

Applications

Application Note

*Optimal dilutions/concentrations should be determined by the researcher.

Suggested dilution	Recommended dilution
WB	2-3µg/ml
ICC/IF	10µg/ml

Not tested in other applications.

Calculated MW 62 kDa. ([Note](#))

Properties

Form	Liquid
Buffer	PBS
Preservative	0.02% Sodium azide
Storage	Store as concentrated solution. Centrifuge briefly prior to opening vial. For short-term storage (1-2 weeks), store at 4°C. For long-term storage, aliquot and store at -20°C or below. Avoid multiple freeze-thaw cycles.
Concentration	Batch dependent (Please refer to the vial label for the specific concentration.)
Immunogen	Peptide corresponding to aa 521-536 of human CARD9 (accession no. AF31187). This sequence differs from that of rat CARD9 by two amino acids.
Purification	Purified by affinity chromatography
Conjugation	Unconjugated

Note

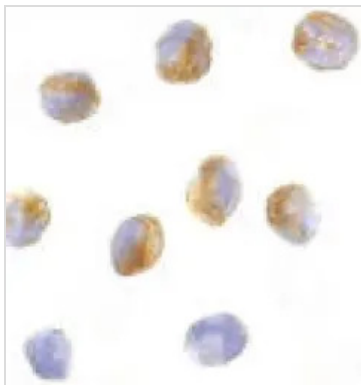
For laboratory research use only. Not for any clinical, therapeutic, or diagnostic use in humans or animals. Not for animal or human consumption.

Purchasers shall not, and agree not to enable third parties to, analyze, copy, reverse engineer or otherwise attempt to determine the structure or sequence of the product.



For full product information, images and publications, please visit our [website](#).

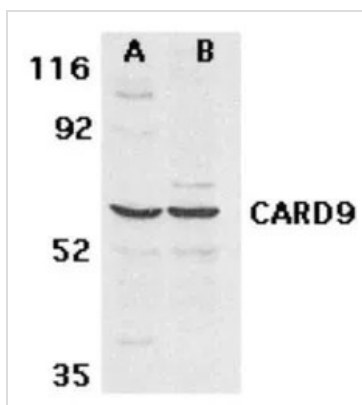
DATA IMAGES



GTX29649 ICC/IF Image

ICC/IF analysis of K562 cells using GTX29649 CARD9 antibody.

Dilution : 10µg/ml



GTX29649 WB Image

WB analysis of MDAMB-361 (A) and PC-3 (B) cell lysates using GTX29649 CARD9 antibody.

Dilution : 2.5µg/ml



For full product information, images and publications, please visit our [website](#).