

BMF antibody

Cat. No. GTX29655

Host	Rabbit
Clonality	Polyclonal
Isotype	IgG
Application	WB, ICC/IF, ELISA
Reactivity	Human, Mouse

Package
100 µg

APPLICATION

Application Note

*Optimal dilutions/concentrations should be determined by the researcher.

Suggested dilution	Recommended dilution
WB	2µg/ml
ICC/IF	10µg/ml
ELISA	Assay dependent

Not tested in other applications.

Calculated MW	21 kDa. (Note)
Product Note	This antibody recognizes an epitope at the N-terminus of human Bmf (Bcl-2-Modifying Factor), a novel BH3-only protein.

PROPERTIES

Form	Liquid
Buffer	PBS
Preservative	0.02% Sodium azide
Storage	Store as concentrated solution. Centrifuge briefly prior to opening vial. For short-term storage (1-2 weeks), store at 4°C. For long-term storage, aliquot and store at -20°C or below. Avoid multiple freeze-thaw cycles.
Concentration	Batch dependent (Please refer to the vial label for the specific concentration.)
Immunogen	Peptide corresponding to aa 2-14 of human Bmf (accession no. NP_277038).
Purification	Purified by affinity chromatography
Conjugation	Unconjugated



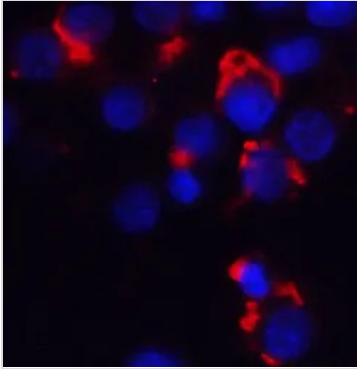
For full product information, images and publications, please visit our [website](#).

For laboratory research use only. Not for any clinical, therapeutic, or diagnostic use in humans or animals. Not for animal or human consumption.

Note

Purchasers shall not, and agree not to enable third parties to, analyze, copy, reverse engineer or otherwise attempt to determine the structure or sequence of the product.

DATA IMAGES



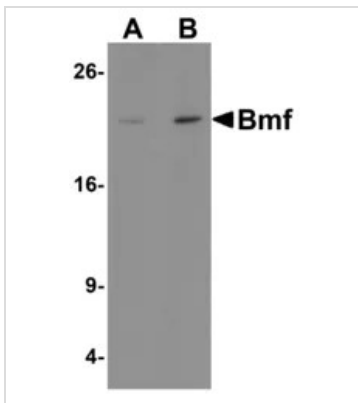
GTX29655 ICC/IF Image

ICC/IF analysis of HeLa cells using GTX29655 BMF antibody.

Red : Primary antibody

Blue : DAPI

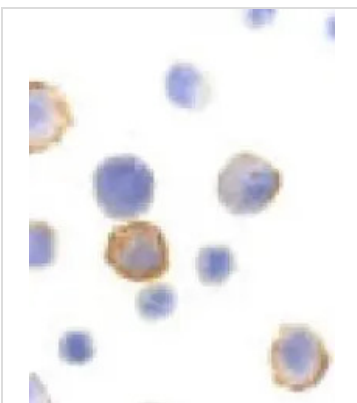
Dilution : 5 µg/ml



GTX29655 WB Image

WB analysis of 293 cell lysate using GTX29655 BMF antibody.

Dilution : 1 µg/ml (Lane A) and 2 µg/ml (Lane B)



GTX29655 ICC/IF Image

Immunocytochemical staining of Bmf in HeLa cells with Bmf antibody (GTX29655) at 10 µg/ml.



For full product information, images and publications, please visit our [website](https://www.genetex.com).