

## EGF antibody

Cat. No. GTX29695

Host	Rabbit
Clonality	Polyclonal
Isotype	IgG
Applications	WB, IHC-P, ELISA, Neutralizing/Inhibition, Sandwich ELISA
Reactivity	Human

Package  
50 µg

## Applications

## Application Note

\*Optimal dilutions/concentrations should be determined by the researcher.

Suggested dilution	Recommended dilution
WB	0.1 - 0.2 µg/mL
IHC-P	Assay dependent
ELISA	0.1 - 0.2 µg/mL
Neutralizing/Inhibition	0.25 - 0.35 µg/mL
Sandwich ELISA	0.5 - 2.0 µg/mL

**Note : To yield one-half maximal inhibition [ND<sub>50</sub>] of the biological activity of hEGF (2.0 ng/mL)****Capture : GTX29695, Detection : Biotinylated Anti-Human EGF antibody**

Not tested in other applications.

**Calculated MW** 134 kDa. ( [Note](#) )

## Properties

Form	Liquid
Buffer	PBS
Preservative	No preservatives
Storage	Store as concentrated solution. Centrifuge briefly prior to opening vial. For short-term storage (1-2 weeks), store at 4°C. For long-term storage, aliquot and store at -20°C or below. Avoid multiple freeze-thaw cycles.
Concentration	Batch dependent (Please refer to the vial label for the specific concentration.)
Immunogen	Produced from sera of rabbits pre-immunized with highly pure (>98%) recombinant hEGF.
Purification	Purified by antigen-affinity chromatography
Conjugation	Unconjugated

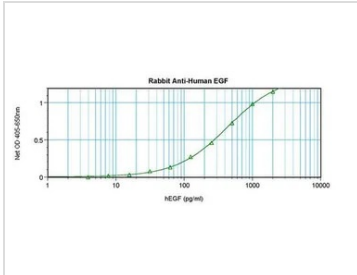


For full product information, images and publications, please visit our [website](#).

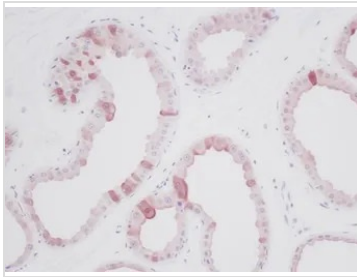
For laboratory research use only. Not for any clinical, therapeutic, or diagnostic use in humans or animals. Not for animal or human consumption.

**Note**

Purchasers shall not, and agree not to enable third parties to, analyze, copy, reverse engineer or otherwise attempt to determine the structure or sequence of the product.

**DATA IMAGES**

**GTX29695 ELISA Image**

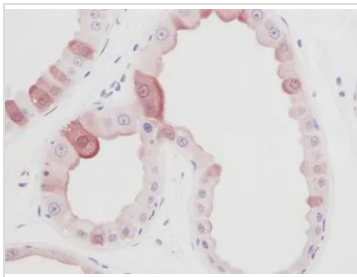
ELISA analysis of human EGF recombinant protein(0.2 - 0.4 ng/well) using GTX29695 EGF antibody(capture antibody) at 0.5 - 2.0 ug/ml and Biotinylated Anti-Human EGF as a detection antibody.


**GTX29695 IHC-P Image**

IHC-P analysis of human skin tissue using GTX29695 EGF antibody.

Working concentration : 1.0 ug/ml - 2.5 ug/ml

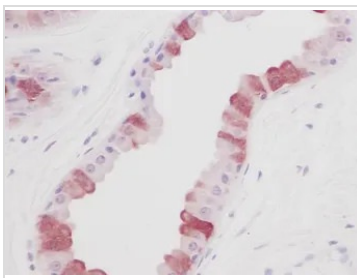
Antigen retrieval : proteinase K.


**GTX29695 IHC-P Image**

IHC-P analysis of human skin tissue using GTX29695 EGF antibody.

Working concentration : 1.0 ug/ml - 2.5 ug/ml

Antigen retrieval : proteinase K.


**GTX29695 IHC-P Image**

IHC-P analysis of human skin tissue using GTX29695 EGF antibody.

Working concentration : 1.0 ug/ml - 2.5 ug/ml

Antigen retrieval : proteinase K.



For full product information, images and publications, please visit our [website](https://www.genetex.com).