

G-CSF antibody

Cat. No. GTX29751

Host	Rabbit
Clonality	Polyclonal
Isotype	IgG
Applications	WB, ELISA, Neutralizing /Inhibition, Sandwich ELISA
Reactivity	Mouse

Package
50 µg

Applications

Application Note

*Optimal dilutions/concentrations should be determined by the researcher.

Suggested dilution	Recommended dilution
WB	0.1 - 0.2 µg/mL
ELISA	0.5 µg/mL
Neutralizing /Inhibition	0.005 - 0.010µg/mL
Sandwich ELISA	0.5 - 2.0 ug/ml

**Note : To yield one-half maximal inhibition [ND₅₀] of the biological activity of mG-CSF (0.5 ng/mL)
Capture : GTX29751, Detection : Biotinylated Anti-Murine G-CSF antibody**

Not tested in other applications.

Calculated MW 22 kDa. ([Note](#))

Properties

Form	Liquid
Buffer	PBS
Preservative	No preservatives
Storage	Store as concentrated solution. Centrifuge briefly prior to opening vial. For short-term storage (1-2 weeks), store at 4°C. For long-term storage, aliquot and store at -20°C or below. Avoid multiple freeze-thaw cycles.
Concentration	Batch dependent (Please refer to the vial label for the specific concentration.)
Immunogen	Produced from sera of rabbits pre-immunized with highly pure (>98%) recombinant mG-CSF.
Purification	Purified by antigen-affinity chromatography
Conjugation	Unconjugated



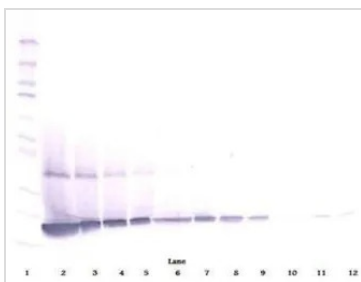
For full product information, images and publications, please visit our [website](#).

For laboratory research use only. Not for any clinical, therapeutic, or diagnostic use in humans or animals. Not for animal or human consumption.

Note

Purchasers shall not, and agree not to enable third parties to, analyze, copy, reverse engineer or otherwise attempt to determine the structure or sequence of the product.

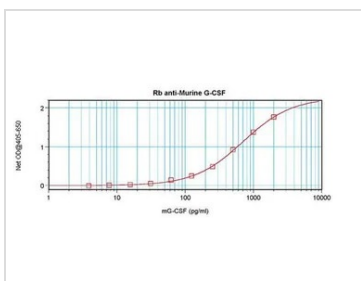
DATA IMAGES



GTX29751 WB Image

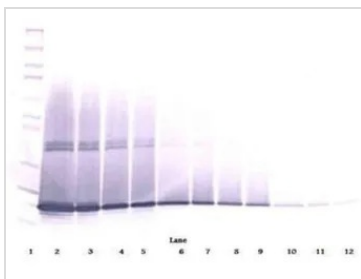
WB analysis of sequential diluted mouse G-CSF under either reducing or non-reducing conditions using GTX29751 G-CSF antibody.

Working concentration : 0.1 - 0.2 ug/ml



GTX29751 ELISA Image

ELISA analysis of mouse G-CSF recombinant protein(0.2 - 0.4 ng/well) using GTX29751 G-CSF antibody(capture antibody) at 0.5 - 2.0 ug/ml and Biotinylated Anti-Murine G-CSF as a detection antibody.



GTX29751 WB Image

WB analysis of sequential diluted mouse G-CSF under either reducing or non-reducing conditions using GTX29751 G-CSF antibody.

Working concentration : 0.1 - 0.2 ug/ml



For full product information, images and publications, please visit our [website](#).