

TGF beta 1 antibody

Cat. No. GTX29758

Host	Rabbit
Clonality	Polyclonal
Isotype	IgG
Applications	WB, ICC/IF, IHC-P, ELISA
Reactivity	Human

Package
50 µg

Applications

Application Note

*Optimal dilutions/concentrations should be determined by the researcher.

Suggested dilution	Recommended dilution
WB	1:100-1:500
ICC/IF	Assay dependent
IHC-P	Assay dependent
ELISA	1:10000-1:20000

Not tested in other applications.

Calculated MW 44 kDa. ([Note](#))

Properties

Form	Liquid
Buffer	20mM Potassium Phosphate, 150mM NaCl
Preservative	0.01% Sodium azide
Storage	Store as concentrated solution. Centrifuge briefly prior to opening vial. For short-term storage (1-2 weeks), store at 4°C. For long-term storage, aliquot and store at -20°C or below. Avoid multiple freeze-thaw cycles.
Concentration	1.13 mg/ml (Please refer to the vial label for the specific concentration.)
Immunogen	Synthetic peptide corresponding to amino acids near the amino terminus of the mature growth factor (112 amino acids in length).
Purification	Purified by antigen-affinity chromatography. From serum
Conjugation	Unconjugated

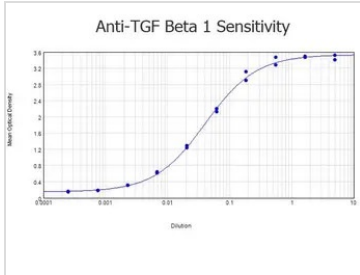


For full product information, images and publications, please visit our [website](#).

For laboratory research use only. Not for any clinical, therapeutic, or diagnostic use in humans or animals. Not for animal or human consumption.

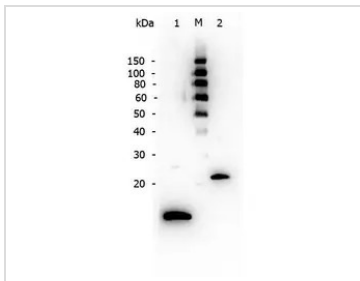
Note
Purchasers shall not, and agree not to enable third parties to, analyze, copy, reverse engineer or otherwise attempt to determine the structure or sequence of the product.

DATA IMAGES



GTX29758 ELISA Image

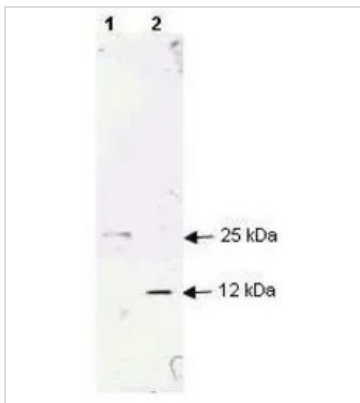
ELISA analysis of SA-conjugated immunizing peptide using GTX29758 TGF beta 1 antibody. Each well was coated in duplicate with 0.1µg of conjugate.



GTX29758 WB Image

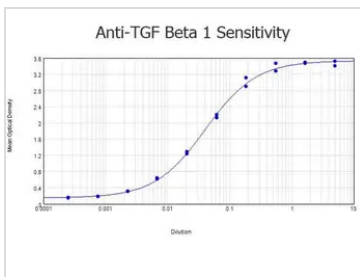
WB analysis of recombinant TGF Beta 1 proteins using GTX29758 TGF beta 1 antibody.

- Lane 1 : Reduced recombinant TGF Beta 1
 - Lane 2 : Protein Ladder
 - Lane 3 : Non-reduced recombinant TGF Beta 1
- Loading : 250ng per lane
Dilution : 1:200



GTX29758 WB Image

Western blot analysis using GeneTex's Affinity Purified anti-TGF beta 1 antibody to detect human TGF beta 1. Each lane contains 250 ng of protein under non-reducing (lane 1) and reducing conditions (lane 2). Comparison to molecular weight markers (not shown) was used to estimate the indicated molecular weights. The blot was incubated with a 1:200 dilution of the antibody at room temperature for 1 h followed by detection using IRDyeR 800 labeled Goat-a-Rabbit IgG (H&L) diluted 1:2,500. IRDyeR 800 fluorescence image was captured using the OdysseyR Infrared Imaging System developed by LI-COR. IRDye is a trademark of LI-COR, Inc. Other detection systems will yield similar results.



GTX29758 ELISA Image

ELISA analysis of BSA-conjugated immunizing peptide using serially diluted GTX29758 TGF beta 1 antibody.
Coating : 0.1 µg



For full product information, images and publications, please visit our [website](#).